

# MITSUBISHI TRITON '2005-'2008



1 FRONT BUMPER 2WD W/O HOLE NA

2 FRONT BUMPER 4WD W/O HOLE NB

3 F.BUMPER 2 DOOR



NO	CODE	DESCRIPTION	PATTERN	MODEL	YEAR	OEM	PCS	M3	N.W.	GW	PART LINK
1	MBB047 NA	F.BUMPER 2 WD W/O HOLE		4DOOR / SPACE CAB	'05-'06	6400A746ZZT					
2	MBB047 NB	F.BUMPER 4 WD W/O HOLE		4DOOR / SPACE CAB	'05-'06	6400A747ZZT					
3	MBB049 NA	F.BUMPER SINGLE CAB BK		2 DOOR	'05-'06	6400A748T					

4 REAR BUMPER

5 REAR BUMPER

6 REAR BUMPER



NB



NC



NF

NO	CODE	DESCRIPTION	PATTERN	MODEL	YEAR	OEM	PCS	M3	N.W.	GW	PART LINK
4	MBIB048 NB	REAR BUMPER	UNIVERSAL	TRITON	05-'07						
5	MBIB048 NC	REAR BUMPER MITSU SPEC WITH PP		TRITON	05-08						
6	MBIB048 NF	REAR BUMPER CP W/LAMP AND PP PROTECTOR		TRITON	'95-'07						
	MBIB048 NS	REAR BUMPER STANLESS		TRITON	06-08						

7 BUMPER FINISHER 2WD

8 BUMPER FINISHER 4WD

9 GRILLE



NO	CODE	DESCRIPTION	PATTERN	MODEL	YEAR	OEM	PCS	M3	N.W.	GW	PART LINK
7	MBBF047 NA	BUMPER FINISHER 2WD (NARROW)		4DOOR / SPACE CAB	'05-'06	6402A072T					
8	MBBF047 NB	BUMPER FINISHER 4WD (WIDER)		4DOOR / SPACE CAB	'05-'06	6402A073T					
9	MBG049 NA	GRILLE SINGLE CAB CP/BK		2 DOOR	'05-'06						
	MBG049 NB	GRILLE MAT SINGLE CAB BK		2 DOOR	'05-'06	7450A180T					
	MBG049 NC	GRILLE FULL CP 2 DOOR		TRITON	06-08	PERFORMANCE					

10 GRILL CP/GY MS

R/LA

11 GRILLE MAT BK

R/LB A

12 GRILLE ALL CP

R/LC A



NO	CODE	DESCRIPTION	PATTERN	MODEL	YEAR	OEM	PCS	M3	N.W.	GW	PART LINK
10	MBG047 LA	GRILLE LH	CP/GYMS	4DOOR / SPACE CAB	'05-'06	7450A187T					
	MBG047 RA	GRILLE RH	CP/GYMS	4DOOR / SPACE CAB	'05-'06	7450A188T					
11	MBG047 LB	GRILLE MAT BK LH	BK	4DOOR / SPACE CAB	'05-'06	7450A185T					
	MBG047 RB	GRILLE MAT BK RH	BK	4DOOR / SPACE CAB	'05-'06	7450A188T					
12	MBG047 LC	GRILLE ALL CP LH		TRITON 4 DOOR	'05-'07	7450A187T					
	MBG047 RC	GRILLE ALL CP RH		TRITON 4 DOOR	'05-'07	7450A188T					
	MBG047 LD	GRILLE CP LH	PERFORMANCE	TRITON 4 DOOR	'05-'07						
	MBG047 RD	GRILLE CP RH	PERFORMANCE	TRITON 4 DOOR	'05-'07						

13 GRILLE SET

14 BUMPER COVER LOWER 2WD

15 BUMPER COVER LOWER 4WD



NO	CODE	DESCRIPTION	PATTERN	MODEL	YEAR	OEM	PCS	M3	N.W.	GW	PART LINK
13	MBG047 RM	GRILLE SET CP RH			'05						
	MBG047 LM	GRILLE SET CP/BK LH			'05						
14	MBSP047 NA	BUMPER COVER LOWER 2WD WIDER		4DOOR / SPACE CAB	'05-'06	MN136897T					
15	MBSP047 NB	BUMPER COVER LOWER 4WD NARROW		4DOOR / SPACE CAB	'05-'06	MN146335T					

# MITSUBISHI TRITON '2005-'2008

## 1 HEAD LAMP 4DRS UNIT

R/LA A



## 2 HEAD LAMP UNIT CLEAR

R/LC A



## 3 HEAD LAMP ASSY



NO	CODE	DESCRIPTION	PATTERN	MODEL	YEAR	OEM	PCS	M3	N.W.	GW	PART LINK
1	MBHL047 RA	HEAD LAMP 4DRS UNIT RH	AMBER	TRITON	'07	8301A010T					
	MBHL047 LA	HEAD LAMP 4DRS UNIT LH	AMBER	TRITON	'07	8301A011T					
2	MBHL047 LC	HEAD LAMP UNIT CLEAR LH		TRITON	06-08	8301B549T					
	MBHL047 RC	HEAD LAMP UNIT CLEAR RH		TRITON	06-08	8301B550T					
3	8301A505T	HEAD LAMP LH ASSY	O.E.M.	4DOOR / SPACE CAB	'05-'06	8301A505T					
	8301A506T	HEAD LAMP RH ASSY	O.E.M.	4DOOR / SPACE CAB	'05-'06	8301A506T					

## 4 HEAD LAMP SINGLE CAB ASSY



## 5 SIDE LAMP



## 6 FOG LAMP

R/LA A



NO	CODE	DESCRIPTION	PATTERN	MODEL	YEAR	OEM	PCS	M3	N.W.	GW	PART LINK
4	MBHL049 RA	HEAD LAMP SINGLE CABRH	ASSY	2 DOOR	'05-'07	8301A504T					
	MBHL049 LA	HEAD LAMP SINGLE CABLH	ASSY	2 DOOR	'05-'07	8301A503T					
5	MBSL047 NA	SIDE LAMP		TRITON	'06-'07	8351A003T					
6	MBFL047 LA	FOG LAMP LH		TRITON	'06	MZ313239KT					
	MBFL047 RA	FOG LAMP RH			'06	MZ313240KT					

## 7 FOG LAMP W/SILVER RIM

R/LB A



## 8 FOG LAMP COVER



## 9 FOG LAMP COVER



NO	CODE	DESCRIPTION	PATTERN	MODEL	YEAR	OEM	PCS	M3	N.W.	GW	PART LINK
7	MBFL047 LB	FOG LAMP W/SILVER RIM LH		TRITON	'06						
	MBFL047 RB	FOG LAMP W/SILVER RIM RH		TRITON	'06						
8	MBFC047 LA	FOG LAMP COVER LH		4DOOR / SPACE CAB	'05-'06	8321A086ZZT					
	MBFC047 RA	FOG LAMP COVER RH		4DOOR / SPACE CAB	'05-'06	8321A085ZZT					
9	6400A965HBT	FOG LAMP COVER RH		TRITON		6400A965HBT					
	6400A966HB	FOG LAMP COVER LH		TRITON		6400A966HB					

## 10 TAIL LAMP UNIT

R/LA A



## 11 TAIL LAMP ASSY

R/LB A



## 12 REFLECTOR LAMP



NO	CODE	DESCRIPTION	PATTERN	MODEL	YEAR	OEM	PCS	M3	N.W.	GW	PART LINK
11	MBL047 RA	TAIL LAMP RH	UNIT	TRITON	05-'07	8330A010T					
	MBL047 LA	TAIL LAMP LH	UNIT	TRITON	05-'07	8330A009T					
12	MBL047 RB	TAIL LAMP RH	ASSY	TRITON	05-'07	8330A156T					
	MBL047 LB	TAIL LAMP LH	ASSY	TRITON	05-'07	8330A155T					
13	MBRL047 LA	REFLECTOR LAMP LH		TRITON	06	8355A015T	10	0.0200	2.00	3.00	
	MBRL047 RA	REFLECTOR LAMP RH		TRITON	06	8355A016T	10	0.0200	2.00	3.00	

## 13 TAIL GATE BRAKE LAMP



## 14 DOOR MIRROR CP ELC 3COD R/LA A



## 15 DOOR MIRROR LEC 5COD R/LB A



NO	CODE	DESCRIPTION	PATTERN	MODEL	YEAR	OEM	PCS	M3	N.W.	GW	PART LINK
13	MN146214T	TAIL GATE BRAKE LAMP		TRITON	'05	MN146214FT					
14	MBMR047 LA	DOOR MIRROR CP LH ELC 3 COD		TRITON	05-'07	MN136775T					
	MBMR047 RA	DOOR MIRROR CP RH ELC 3COD		TRITON	05-'07	MN136776T					
15	MBMR047 RB	DOOR MIRROR RH ELC 5 COD		TRITON	05-'07	MN136778T					
	MBMR047 LB	DOOR MIRROR LH ELC 5 COD		TRITON	05-'07	MN136777T					

# MITSUBISHI TRITON '2005-'2008

## 1 DOOR MIRROR BK MANUAL



## 2 MIRROR



## 3 DOOR MIRROR COVER WITH LED MAT



NO	CODE	DESCRIPTION	PATTERN	MODEL	YEAR	OEM	PCS	M3	N.W.	GW	PART LINK
1	MN136771T	DOOR MIRROR BK MANUAL LH		TRITON	'06-'07	MN136771T					
	MN136772T	DOOR MIRROR BK MANUAL RH		TRITON	'06-'07	MN136772T					
2	7632A226T	MIRROR RH		TRITON	'07-'08	7632A226T					
	7632A225T	MIRROR LH		TRITON	'07-'08	7632A225T					
3	MBMC047 LA	DOOR MIRROR COVER WITH LED MAT LH		TRITON	'05-'08						
	MBMC047 RA	DOOR MIRROR COVER WITH LED MAT RH		TRITON	'05-'08						

## 4 DOOR MIRROR COVER WITH CHROME



## 5 DOOR MIRROR COVER WITH LED COLOR



## 6 DOOR MIRROR COVER CP



NO	CODE	DESCRIPTION	PATTERN	MODEL	YEAR	OEM	PCS	M3	N.W.	GW	PART LINK
4	MBMC047 RB	DOOR MIRROR COVER WITH CHROME RH		TRITON	'05-'08						
	MBMC047 LB	DOOR MIRROR COVER WITH CHROME LH		TRITON	'05-'08						
5	MBMC047 LC	DOOR MIRROR COVER WITH LED COLOR LH		TRITON	05-08						
	MBMC047 RC	DOOR MIRROR COVER WITH LED COLOR RH		TRITON	05-08						
6	7632A488	DOOR MIRROR COVER CP RA		TRITON	'07-'08	7632A488					
	7632A487	DOOR MIRROR COVER CP LA		TRITON	'07-'08	7632A487					

## 7 ROOM MIRROR



## 8 BACK GLASS



## 9 FRONT WINDSCREEN GLASS



NO	CODE	DESCRIPTION	PATTERN	MODEL	YEAR	OEM	PCS	M3	N.W.	GW	PART LINK
7	MN124448T	ROOM MIRROR		TRITON	07	MN124448T	1	0.0034	0.27	0.37	
8	MN117500	BACK GLASS (CANNOT OPEN)		TRITON	06-'07	MN117500					
9	MN146101T	FRONT WINDSCREEN GLASS		TRITON	'05-'08	MN146101T					

## 10 FENDER 2WD R/LA A



## 11 FENDER WITE S/LAMP HOLE&WITH FLARE HOLE



## 12 BODY SIDE PANEL



NO	CODE	DESCRIPTION	PATTERN	MODEL	YEAR	OEM	PCS	M3	N.W.	GW	PART LINK
10	MBF047 LA	FENDER LH 2WD		2/4 DOOR / SPACE CAB	'05-'06	5220A817T					
	MBF047 RA	FENDER RH 2WD		2/4 DOOR / SPACE CAB	'05-'06	5220A818T					
11	MBF047 LB	FENDER WITH S/LAMP HOLE & WITH FLARE HOLE LH		2/4 DOOR / SPACE CAB	'05-'06	5220A819T					
	MBF047 RB	FENDER WITH S/LAMP HOLE & WITH FLARE HOLE RH		2/4 DOOR / SPACE CAB	'05-'06	5220A820T					
12	6722A013	GATE,RR BODY LH		TRITON	'06-'07	6722A013	1	0.6080	14.00	17.00	
	6724A014	GATE,RR BODY RH		TRITON	'06-'07	6724A014	1	0.6080	14.00	17.00	

# MITSUBISHI TRITON '2005-'2008

1 SIDE PANEL

2 HOOD 2 DOOR & 4 DOOR

3 HOOD



NO	CODE	DESCRIPTION	PATTERN	MODEL	YEAR	OEM	PCS	M3	N.W.	GW	PART LINK
1	6722A015T	SIDE PANEL LH	4DOOR	TRITON	'05	6722A015T					
	6722A016T	SIDE PANEL RH	4DOOR	TRITON	'05	6722A016T					
2	5900A087T	HOOD	O.E.M.	2/4 DOOR / SPACE CAB	'05-'06	5900A087T					
3	MBH047 NA	HOOD		SPACE CAB	'05-'06	5900A087T					

4 FRONT DOOR

5 DOOR COMPLETE SPACE CAB

6 FRONT DOOR



NO	CODE	DESCRIPTION	PATTERN	MODEL	YEAR	OEM	PCS	M3	N.W.	GW	PART LINK
4	5700A175T	FRONT DOOR LH		4DOOR/SPACE CAR	'05-'06	5700A175T					
	5700A176T	FRONT DOOR RH		4DOOR/SPACE CAR	'05-'06	5700A176T					
5	5700A177T	DOOR COMPLETE SPACE CAB LH		TRITON	'06-'07	5700A177T					
	5700A178T	DOOR COMPLETE SPACE CAB RH		TRITON	'06-'07	5700A178T					
6	MBFD049 UR	FRONT DOOR USED RH		TRITON	'06-'07						
	MBFD049 UL	FRONT DOOR USED LH		TRITON	'06-'07						

7 REAR DOOR

8 ROOF DOUBLE CAB 4WD

9 ROOF SINGLE CAB



NO	CODE	DESCRIPTION	PATTERN	MODEL	YEAR	OEM	PCS	M3	N.W.	GW	PART LINK
7	MBFD047 R LA	REAR DOOR LH		4DOOR	'05-'06	5730A201T					
	MBFD047 R RA	REAR DOOR RH		4DOOR	'05-'06	5730A202T					
8	5290A490T	ROOF DOUBLE CAB 4WD		TRITON	'06-'07	5290A490T					
9	5290A488T	ROOF SINGLE CAB		TRITON	'06-'07	5290A488T					
	5290A489T	ROOF DOUBLE CAB 2WD		TRITON	07	5290A489T	1	0.3938	9.60	14.00	

10 FRONT DOOR SKIN

11 HEAD LINING

12 ROOF LINING 4 DOOR \*\*NEW\*\*\*



NO	CODE	DESCRIPTION	PATTERN	MODEL	YEAR	OEM	PCS	M3	N.W.	GW	PART LINK
10	5700A180T	FRONT DOOR SKIN RH		TRITON	'06	5700A180T					
	5700A179T	FRONT DOOR SKIN LH		TRITON	'06	5700A179T					
11	7200A192HAT	HEAD LINING		TRITON	'07	7200A192HAT					
12	MN123855HAVT	ROOF LINING 4 DOOR		TRITON	06-08	MN123855HAVT	1	0.1000	10.00	12.00	

13 TAIL GATE W/O BRAKE LAMP **NA**

14 TAIL GATE WITH BRAKE LAMP **NB**

15 GATE, RR BODY



NO	CODE	DESCRIPTION	PATTERN	MODEL	YEAR	OEM	PCS	M3	N.W.	GW	PART LINK
13	MBT047 NA	TAIL GATE W/O BRAKE LAMP		TRITON	'05	6724A003T					
14	MBT047 NB	TAIL GATE WITH BRAKE LAMP		TRITON	'05	6724A004T					
15	6724A014	GATE,RR BODY RH		TRITON	06-07	6724A014					

# MITSUBISHI TRITON '2005-'2008

1 TAIL GATE HIGH CAB



2 REAR TAIL BODY SINGLE CAB



3 PILLAR REAR OUTER DOUBLE



NO	CODE	DESCRIPTION	PATTERN	MODEL	YEAR	OEM	PCS	M3	N.W.	GW	PART LINK
1	6724A028T	TAIL GATE HIGH CAB		TRITON	'09	6724A028T	1	0.1218			
2	MBTB047 NA	REAR TAIL BODY SINGLE CAB		TRITON	'05-'07						
	MBTB047 NB	REAR TAIL BODY DOUBLE CAB		TRITON	'05-'07						
	MBTB047 NC	REAR TAIL BODY EXTRA CAB		TRITON	'05-'07						
3	5301A678T	PILLAR REAR OUTER DOUBLE RH		TRITON	'06-'07	5301A678T					
	5301A677T	PILLAR REAR OUTER DOUBLE LH		TRITON	'06-'07	5301A677T					

4 PILLAR CENTER OUTER



5 PILLAR CENTER OUTER DOUBLE



6 SILL BODY LOWER OUTER 2 DOOR



NO	CODE	DESCRIPTION	PATTERN	MODEL	YEAR	OEM	PCS	M3	N.W.	GW	PART LINK
4	5312A255	PILLAR CENTER OUTER LH		TRITON	'07-'08	5312A255					
	5312A256	PILLAR CENTER OUTER RH		TRITON	'07-'08	5312A256	1	0.1787	3.80	4.93	
5	5312A256T	PILLAR CENTER OUTER DOUBLE RH		TRITON	'06-'07	5312A256T					
	5312A255T	PILLAR CENTER OUTER DOUBLE LH		TRITON	'06-'07	5312A255T					
6	5253A933T	SILL BODY LOWER OUTER 2 DOOR RH		TRITON	'06-'08	5253A933T					
	5253A934T	SILL BODY LOWER OUTER 2 DOOR LH		TRITON	'06-'08	5253A934T					

7 PANEL QUARTER OUTER



8 FRONT PILLAR OUTER 2 DOOR



9 PILLAR REAR OUTER SINGLE CAB 2DRS



10 PILLAR REAR OUTER SINGLE CAB



NO	CODE	DESCRIPTION	PATTERN	MODEL	YEAR	OEM	PCS	M3	N.W.	GW	PART LINK
7	5301A678VT	PANEL QUARTER OUTER RH		TRITON	'07-'08	5301A678VT					
	5301A677VT	PANEL QUARTER OUTER LH		TRITON	'07-'08	5301A677VT					
8	5311A483T	FRONT PILLAR OUTER 2 DOOR RH		TRITON	'06-'09	5311A483T					
	5311A484T	FRONT PILLAR OUTER 2 DOOR LH		TRITON	'06-'09	5311A484T					
9	5313A119T	PILLAR REAR OUTER SINGLE CAB LH		TRITON	'06-'07	5313A119T	1	0.3202	3.70	6.50	
10	5301A66T	PILLAR REAR OUTER SINGLE CAB RH		TRITON	'06-'09	5301A66T					
	5301A668VT	PILLAR REAR OUTER SINGLE LH		TRITON	'06-'09	5301A668VT					

11 SINGLE/DOUBLE



12 RADIATOR FAN SHROUD LOWER



13 F. FENDER FLARE 2DOOR / 4 DOOR



NO	CODE	DESCRIPTION	PATTERN	MODEL	YEAR	OEM	PCS	M3	N.W.	GW	PART LINK
11	5311A488T	PILLAR FRONT OUTER DOUBLE RH		TRITON	'06-'07	5311A488T					
	5311A487T	PILLAR FRONT OUTER DOUBLE LH		TRITON	'06-'07	5311A487T					
12	MN135064T	RADIATOR FAN SHROUD LOWER		TRITON	'05-'07	MN135064T					
13	MBFF047 LA	F.FENDER FLARE LH		4DOOR / SPACE CAB	'05-'06	7420A031HAT					
	MBFF047 RA	F.FENDER FLARE RA		4DOOR / SPACE CAB	'05-'06	7420A032HAT					
	MBFF047 RL	R. FENDER FLARE LH		4DOOR / SPACE CAB	'05-'06	7420A033 HAT					
	MBFF047 RR	R. FENDER FLARE RH		4DOOR / SPACE CAB	'05-'06	7420A034 HAT					
	MBFF047 SB	FENDER FLARE SETS DOUBLE CAB		TRITON	'06-'07						

# MITSUBISHI TRITON '2005-'2008

1 WEATHER GUARD NORMAL SIZE 2 DRS



2 WEATHER GUARD NORMAL SIZE 4 DRS



3 WEATHER GUARD NORMAL SIZE 2 DRS  
TRANSPARENT COLORED



NO	CODE	DESCRIPTION	PATTERN	MODEL	YEAR	OEM	PCS	M3	N.W.	GW	PART LINK
1	MBWG047 MA	WEATHER GUARD NORMAL SIZE 2 DRS TRANSPARENT		TRITON	'06-'08						
2	MBWG047 MB	WEATHER GUARD NORMAL SIZE 4 DRS TRANSPARENT BK		TRITON	'06-'08						
3	MBWG047 MC	WEATHER GUARD NORMAL SIZE 2 DRS TRANSPARENT COLORED		TRITON	'06-'08						

4 WEATHER GUARD NORMAL SIZE 4 DRS  
TRANSPARENT COLORED



5 WEATHER GUARD SLIM SINE 4 DRS



6 JUMBO TRANSPARENT BLACK



NO	CODE	DESCRIPTION	PATTERN	MODEL	YEAR	OEM	PCS	M3	N.W.	GW	PART LINK
4	MBWG047 MD	WEATHER GUARD NORMAL SIZE 4 DRS TRANSPARENT COLORED		TRITON	'06-'08						
	MBWG047 SA	WEATHER GUARD SLIM SIZE 2 DRS TRANSPARENT BK		TRITON	'06-'08						
5	MBWG047 SB	WEATHER GUARD SLIM SIZE 4 DRS TRANSPARENT BK		TRITON	'06-'08						
	MBWG047 SC	WEATHER GUARD SLIM SIZE 2 DRS TRANSPARENT COLORED		TRITON	'06-'08						
	MBWG047 SD	WEATHER GUARD SLIM SIZE 4 DRS TRANSPARENT COLORED		TRITON	'06-'08						
6	MBBG047 BA	JUMBO TRANSPARENT BLACK		TRITON	'05-'07						

7 JUMBO BUG SHEID GUARDS **BC**



8 JUMBO BUG SHEID GUARDS **SA**



9 JUMBO BUG SHEID GUARDS **SC**



NO	CODE	DESCRIPTION	PATTERN	MODEL	YEAR	OEM	PCS	M3	N.W.	GW	PART LINK
7	MBBG047 BC	JUMBO BUG SHEID GUARDS TRSPTRANSPARENT COLORED		TRITON	'05-'07						
8	MBBG047 SA	SLIM BUG SHEID GUARDS TRSPTRANSPARENT BLACK		TRITON	'05-'07						
9	MBBG047 SC	SLIM BUG SHEID GUARDS TRSPTRANSPARENT COLORED		TRITON	'05-'07						

10 MIDUIM BUG SHEID GUARDS **MA**



11 MIDUIM BUG SHEID GUARDS **MC**



12 ROOF BOW



NO	CODE	DESCRIPTION	PATTERN	MODEL	YEAR	OEM	PCS	M3	N.W.	GW	PART LINK
10	MBBG047 MA	MIDUIM BUG SHEID GUARDS TRSPTRANSPARENT BLACK		TRITON	'05-'07						
11	MBBG047 MC	MIDUIM BUG SHEID GUARDS TRSPTRANSPARENT COLORED		TRITON	'05-'07						
12	5290A495T	ROOF BOW		TRITON	'08	5290A495T					

13 REAR BUMPER PROTECTION



14 REAR BUMPER



15 REAR BUMPER SPORT



NO	CODE	DESCRIPTION	PATTERN	MODEL	YEAR	OEM	PCS	M3	N.W.	GW	PART LINK
13	6410A233T	REAR BUMPER PROTECTION		TRITON	'06-'07	6410A233T					
14	MBIB050 NA	REAR BUMPER		TRITON	'05-'07						
15	6410A260VT	REAR BUMPER SPORT		TRITON	'05	6410A260VT					

# MITSUBISHI TRITON '2005-'2008

## 1 SHIELD



## 2 FRONT P/T SIDE PANEL



## 3 REAR P/T SIDE PANEL



NO	CODE	DESCRIPTION	PATTERN	MODEL	YEAR	OEM	PCS	M3	N.W.	GW	PART LINK
1	5370A275	FRONT INNER FENDER REAR PART 2WD/4WD LH (SMALL)		TRITON	'07-'08	5370A275					
	5370A276	FRONT INNER FENDER REAR PART 2WD/4WD RH (SMALL)		TRITON	'07-'08	5370A276					
2	<b>MBIF047 RA</b>	FRONT INNER FENDER FRONT RH BIG		TRITON	'06-'07	5370A278T					
	<b>MBIF047 LA</b>	FRONT INNER FENDER FRONT LH BIG		TRITON	'06-'07	5370A277T					
3	<b>MBIF047 RB</b>	FRONT INNER FENDER REAR RH		TRITON	'06-'07	5370A276T					
	<b>MBIF047 LB</b>	FRONT INNER FENDER REAR LH		TRITON	'06-'07	5370A275T					

## 4 REAR INNER FENDER 2/4WD 4 DOOR



## 5 PLATE UNDER SKID



## 6 COVER ENG ROOM UNDER



NO	CODE	DESCRIPTION	PATTERN	MODEL	YEAR	OEM	PCS	M3	N.W.	GW	PART LINK
4	MBIF047 R LA	REAR INNER FENDER 2/4WD 4 DOOR LH		TRITON	'06-'07	5370A282T					
	MBIF047 R RA	REAR INNER FENDER 2/4WD 4 DOOR RH		TRITON	'06-'07	5370A281T					
5	MN136829	PLATE UNDER SKID		TRITON	'06	MN136829					
6	MN136830	COVER ENG ROOM UNDER		TRITON	'06	MN136830					

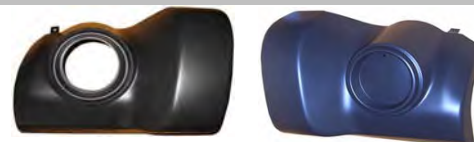
## 7 COVER ENG ROOM UNDER



## 8 HOOD LEDGE



## 9 REAR SIDE BUMPER



W/ LAMP HOLE

W/O LAMP HOLE

NO	CODE	DESCRIPTION	PATTERN	MODEL	YEAR	OEM	PCS	M3	N.W.	GW	PART LINK
7	MN136831	COVER ENG ROOM UNDER		TRITON	'06	MN136831					
8	5220A617T	HOOD LEDGE LH		4DOOR / SPACE CAB	'05-'06	5220A617T					
	5220A618T	HOOD LEDGE RH		4DOOR / SPACE CAB	'05-'06	5220A618T					
9	MBSB050 RA	REAR SIDE BUMPER RH		TRITON	'06-'07	6410A742T					
	MBSB050 LA	REAR SIDE BUMPER LH		TRITON	'06-'07	6410A741					
	MBSB050 RB	REAR BUMPER CORNER KIT RH		TRITON	'07	6410A754T					
	MBSB050 LB	REAR BUMPER CORNER KIT LH		TRITON	'07	6410A753T					

## 10 FRONT PILLAR UPPER



## 11 REAR INNER PILLAR



## 12 FRONT BUMPER BRACKET



NO	CODE	DESCRIPTION	PATTERN	MODEL	YEAR	OEM	PCS	M3	N.W.	GW	PART LINK
10	5311A490T	FRONT PILLAR UPPER RH		TRITON	07-08	5311A490T					
	5311A489T	FRONT PILLAR UPPER LH		TRITON	07-08	5311A489T					
11	5313A200T	REAR INNER PILLAR RH		TRITON	'07-'08	5313A200T					
	5313A199T	REAR INNER PILLAR LH		TRITON	'07-'08	5313A199T					
12	MBBS047 RA	FRONT BUMPER BRACKET RH		TRITON	'07-'10	MN146320T					
	MBBS047 LA	FRONT BUMPER BRACKET LH		TRITON	'07-'10	MN146319T					

## 13 REINFORCEMENT



## 14 FRONT PILLAR INNER



## 15 RAIL ROOF SIDE INNER



NO	CODE	DESCRIPTION	PATTERN	MODEL	YEAR	OEM	PCS	M3	N.W.	GW	PART LINK
13	5256A418T	REINFORCEMENT RH		TRITON	'05	5256A418T					
	5256A417T	REINFORCEMENT LH		TRITON	'05	5256A417T					
14	5311A474T	FRONT PILLAR INNER RH		TRITON	07-08	5311A474T					
	5311A473T	FRONT PILLAR INNER LH		TRITON	07-08	5311A473T					
15	5290A478T	RAIL ROOF SIDE INNER RH		TRITON	07-08	5290A478T					
	5290A477T	RAIL ROOF SIDE INNER LH		TRITON	07-08	5290A477T					

# MITSUBISHI TRITON '2005-'2008

1 RADIATOR SUPPORT 4 DOOR



2 ROOF PANEL INNER FRONT



3 PANEL



NO	CODE	DESCRIPTION	PATTERN	MODEL	YEAR	OEM	PCS	M3	N.W.	GW	PART LINK
1	MBR047 NA	RADIATOR SUPPORT		4DOOR / SPACE CAB	'05-'06	5215A052T					
2	5290A492	ROOF PANEL INNER FRONT		TRITON	'06	5290A492					
3	5211A058T	PANEL		TRITON	'05	5211A058T					

4 CENTER INNER PILLAR



5 CROSS MEMBER



6 SASH REAR DOOR WINDOW CTR



NO	CODE	DESCRIPTION	PATTERN	MODEL	YEAR	OEM	PCS	M3	N.W.	GW	PART LINK
4	5312A257T	CENTER INNER PILLAR LH		TRITON	'07-'08	5312A257T					
	5312A258T	CENTER INNER PILLAR RH		TRITON	'07-'08	5312A258T					
	5312A259T	CENTER INNER PILLAR LH		TRITON	'07-'08	5312A259T					
5	5000A067T	CROSS MEMBER		TRITON	'07-'08	5000A067T					
6	MN117553	SASH REAR DOOR WINDOW CTR LH		TRITON	'04-'05	MN117553					
	MN117554	SASH REAR DOOR WINDOW CTR RH		TRITON	'04-'05	MN117554					

7 F.BUMPER REINFORCEMENT DOUBLE CAB



8 FRONT BUMPER REINFORCEMENT SINGLE CAB



9 SHOCK ABSORBER REAR 4WD



NO	CODE	DESCRIPTION	PATTERN	MODEL	YEAR	OEM	PCS	M3	N.W.	GW	PART LINK
7	MN142537T	F.BUMPER REINFORCEMENT DOUBLE CAB		TRITON	'05-'08	MN142537T					
8	MN136494T	F.BUMPER REINFORCEMENT SINGLE CAB		TRITON	'05-'08	MN136494T					
9	MR992632T	SHOCK ABSORBER REAR 4WD		TRITON	'05-'08	MR992632T					

10 SIDE STEP SETS



11 PLATE STEP



12 SHOCK ABSORBER FR.SUSPENSION



NO	CODE	DESCRIPTION	PATTERN	MODEL	YEAR	OEM	PCS	M3	N.W.	GW	PART LINK
10	ST014 MB	SIDE STEP SETS 2.00 M ALUMINIUM TYPE		TRITON	'05-'07						
11	MN146128T	PLATE STEP RH		TRITON	'07-'08	MN146128T					
	MN146127T	PLATE STEP LH		TRITON	'07-'08	MN146127T					
12	MR992321	SHOCK ABSORBER FR.SUSPENSION		TRITON	'06-'08	MR992321	1				

13 DOOR OUTER HANDLE CP



14 DOOR OUTER HANDLE BK



15 HOOD HINGE



NO	CODE	DESCRIPTION	PATTERN	MODEL	YEAR	OEM	PCS	M3	N.W.	GW	PART LINK
13	5716A032T	DOOR OUTER HANDLE CP R/LA		TRITON	'06-'08	5716A032T					
14	5716A031XAT	DOOR OUTER HANDLE BK R/L		TRITON	'06-'08	5716A031XAT					
15	MR473530	HOOD HINGE RH		TRITON	'07-'08	MR473530					
	MR473529	HOOD HINGE LH		TRITON	'07-'08	MR473529					

16 BODY ASSY AIR CLEANER



17 COVER AIR CLEANER WITH HOLE



18 LICENSE PLATE LAMP



NO	CODE	DESCRIPTION	PATTERN	MODEL	YEAR	OEM	PCS	M3	N.W.	GW	PART LINK
16	MN135613T	BODY ASSY AIR CLEANER		TRITON	'05-'07	MN135613T					
	MN135614T	COVER AIR CLEANER W/O HOLE		TRITON	'06-'08	MN135614T					
17	MN171541T	COVER AIR CLEANER WITH HOLE		TRITON	'05-'07	MN171541T					
18	MN146839T	LICENSE PLATE LAMP		TRITON	'05	MN146839T					



# MITSUBISHI TRITON '2005-'2008

## 1 RADIATOR



## 2 OIL COOLER



## 3 INTER COOLER



NO	CODE	DESCRIPTION	PATTERN	MODEL	YEAR	OEM	PCS	M3	N.W.	GW	PART LINK
1	MN135306T	RADIATOR 2500CC 2WD	STD	TRITON	'05-'07	MN135306T					
	MN135032T	RADIATOR 2500CC 4WD		TRITON	'05-'07	MN135032T					
	MN135034T	RADIATOR 3200CC MANUAL		TRITON	'05-'07	MN135034T					
	MN135035T	RADIATOR 3200CC AUTO		TRITON	'05-'07	MN135035T					
	MN135037T	RADIATOR 2500CC 2WD	AUTO	TRITON	'05-'07	MN135037T					
	MBRD047 NM	RADIATOR MANUAL 2500 CC		TRITON	'06-'08	MN135036T					
2	MN135073T	OIL COOLER		TRITON	'05-'07	MN135073T					
3	MBIC047 NA	INTER COOLER		TRITON	'07	MN135001T					

## 4 A/C CONDENSOR



## 5 RADIATOR 2.5cc MANUAL

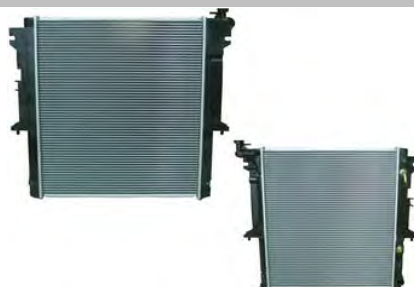


## 6 AIR FILTER



NO	CODE	DESCRIPTION	PATTERN	MODEL	YEAR	OEM	PCS	M3	N.W.	GW	PART LINK
4	MN123606T	A/C CONDENSOR		TRITON	'05-'06	MN123606T					
5	1350A348	RADIATOR 2.5cc MANUAL		L200	'07	1350A348					
6	1500A098T	AIR FILTER		TRITON	'06	1500A098T					

## 7 RADIATOR GASOLENE 3.2 CC AT-26MM NEW!!



## 8 RADIATOR 3.2 GASOLENE MT-26MM



## 9 OIL COOLER



NO	CODE	DESCRIPTION	PATTERN	MODEL	YEAR	OEM	PCS	M3	N.W.	GW	PART LINK
7	MBRD049 NA	RADIATOR GASOLENE 3.2 CC AT-26MM		TRITON	05-09	MN135035T/MN135120/1350A/314/A351					
8	MBRD049 NM	RADIATOR 3.2 GASOLENE MT-26MM		TRITON	06-09	MN135034T/MN135119T	1	0.0866	4.38	6.82	
9	2920A018	OIL COOLER		TRITON	'07-'08	2920A018					

## 10 COOLING FAN SCREW



## 11 RADIATOR SHROUD 2500CC



## 12 RADIATOR SHROUD 3200CC



NO	CODE	DESCRIPTION	PATTERN	MODEL	YEAR	OEM	PCS	M3	N.W.	GW	PART LINK
10	MN135060	COOLING FAN SCREW		TRITON	'05-'07	MN135060					
11	MN135054	FAN COWL 2.5 L		TRITON	05-06	MN135054					
	MN135054T	RADIATOR SHROUD 2500CC		TRITON	'05-'07	MN135054T					
12	MN135059T	RADIATOR SHROUD 3200CC		TRITON	'05-'07	MN135059T					

# MITSUBISHI TRITON '2005-'2008

## 1 RADIATOR FAN



## 2 ENGINE BAN BLADE



## 3 FAN CLUTCH 2500 CC STANDARD



NO	CODE	DESCRIPTION	PATTERN	MODEL	YEAR	OEM	PCS	M3	N.W.	GW	PART LINK
1	1320A015T	RADIATOR FAN		TRITON	'06-'07	1320A015T					
2	EFB047 MB	ENGINE BAN BLADE		TRITON	06-09	1320A015T	20	0.1300	8.00	10.00	
3	1320A011T	FAN CLUTCH 2500 CC STANDARD		TRITON	'05-'08	1320A011T					

## 4 FRONT BUMPER GUARD



## 5 FRONT BUMPER GUARD STAINLESS TUBE FRAME CENTER PLASTIC GUARD



## 6 FRONT BUMPER GUARD LOWER PROTECTION AND STYLING



NO	CODE	DESCRIPTION	PATTERN	MODEL	YEAR	OEM	PCS	M3	N.W.	GW	PART LINK
4	FG-131DA MB	FRONT BUMPER GUARD FOR OVER ALL PROTECTION SIDE AND TOP EXTE		TRITON	'06-'08		1				
5	FG-118A MB	FRONT BUMPER GUARD STAINLESS TUBE FRAME CENTER PLASTIC GUARD		TRITON	'06-'08		1				
6	FG-130A MB	F-BUMP GUARD LOWER PROTECTION AND STYLING		TRITON	'06-'08		1				

## 7 FRONT BUMPER GUARD



## 8 SPORT ROLL BAR ALUMINIUM TYPE



## 9 DOUBLE ROLLBAR WITH ARMS



NO	CODE	DESCRIPTION	PATTERN	MODEL	YEAR	OEM	PCS	M3	N.W.	GW	PART LINK
7	FG-037 MB	FRONT BUMPER GUARD		TRITON	'05-'06	FG-037 MB					
8	RB-709ALA MB	SPORT ROLL BAR ALUMINIUM TYPE		TRITON	'06-'08						
9	RB-700A MB	DOUBLE ROLLBAR WITH ARMS		TRITON	'06-'08						

## 10



## 11 WEATHERSTRIP,REAR DOOR STATION



## 12 AIR BAG PASSENGER MODULE



NO	CODE	DESCRIPTION	PATTERN	MODEL	YEAR	OEM	PCS	M3	N.W.	GW	PART LINK
10	RB-702A MB	MULTI FRAME ROLLBAR 2.5 "		TRITON	'06-'08						
11	MN117605	WEATHERSTRIP,REAR DOOR STATION LH		TRITON	04-05	MN117605					
	MN117606	WEATHERSTRIP,REAR DOOR STATION RH		TRITON	04-05	MN117606					
12	MN123965XAT	AIR ABG PASSENGER MODULE		TRITON	06	MN123965XAT					

## 13 BELLOW STEERING GEAR



## 14 TAIL LAMP COVER CHORME SETS



## 15 COVER



NO	CODE	DESCRIPTION	PATTERN	MODEL	YEAR	OEM	PCS	M3	N.W.	GW	PART LINK
13	4410A180VT	BELLOW STEERING GEAR		TRITON	06	4410A180VT					
14	MBTC047 SA	TAIL LAMP COVER MAT		TRITON	06-08						
	MBTC047 SB	TAIL LAMP COVER CHORME SETS		TRITON	'06-'08		2	0.0133	0.14	0.60	
	MBTC047 SC	TAIL LAMP COVER COLOR		TRITON	06-0						
15	8565A060T	COVER		TRITON	'07-'08	8565A060T					

# MITSUBISHI TRITON '2005-'2008

## 1 DOOR HANDLE

SA



## 2 DOOR HANDLE COVER SETS 4 DOOR SB



## 3 INSULADOR HOOD



NO	CODE	DESCRIPTION	PATTERN	MODEL	YEAR	OEM	PCS	M3	N.W.	GW	PART LINK
1	MBDH047 SA	DOOR HANDLE WITH COVER INSERT 2DR		TRITON	'06-'08						
2	MBDH047 SB	DOOR HANDLE WITH COVER INSERT 4DR		TRITON	'06-'08						
3	MN117517T	INSULADOR HOOD		TRITON	'07-'08	MN117517T					

## 4 STAY



## 5 FRONT BUMPER BRACKET



## 6 UPPER ARM



NO	CODE	DESCRIPTION	PATTERN	MODEL	YEAR	OEM	PCS	M3	N.W.	GW	PART LINK
4	MN136313T	STAY RH		TRITON	'07-'08	MN136313T					
5	MN167870	FRONT BUMPER BRACKET RH		TRITON	'07	MN167870	1	0.0015	0.13	0.14	
	MN167869	FRONT BUMPER BRACKET LH		TRITON	'07	MN167869	1	0.0015	0.13	0.14	
6	4010A018	UPPER ARM RH 2WD		TRITON	'05-'06	4010A018					
	4010A019	UPPER ARM LH 2WD		TRITON	'05-'06	4010A019					

## 7 ALUMINIUM WHEEL TYPE VT



## 8 WIPER GRILLE



LA



RA

NO	CODE	DESCRIPTION	PATTERN	MODEL	YEAR	OEM	PCS	M3	N.W.	GW	PART LINK
7	4250B590T	ALUMINIUM WHEEL TYPE VT		TRITON	05-06	4250B590T					
8	MN117711T	WIPER GRILLE LH		TRITON	07	MN117711T	1	0.0091	0.45	0.47	
	MN117712T	WIPER GRILLE RH		TRITON	07	MN117712T	1	0.0045	0.28	0.30	

## 9 REAR DOOR SKIN



## 10 MUDGUARD



## 11 ENGINE COVER



NO	CODE	DESCRIPTION	PATTERN	MODEL	YEAR	OEM	PCS	M3	N.W.	GW	PART LINK
9	5730A203T	REAR DOOR SKIN LH		TRITON	06	573A203T	1	0.0000	4.38	4.98	
	5730A204T	REAR DOOR SKIN RH		TRITON	06	5730A204T	1	0.0000	4.38	4.98	
10	MN117453	MUDGUARD RH		TRITON	'07-'08	MN117453					
	MN117454	MUDGUARD LH		TRITON	'07-'08	MN117454					
11	MN171914VT	ENGINE COVER 2500 CC		TRITON	07-08	MN171914VT					

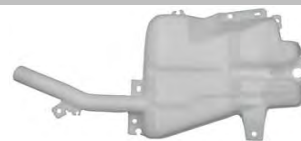
## 12 FOG LAMP BRACKET



## 13 TANK ASSY,RADIATOR CONDENSER



## 14 WIND SCREEN WASHER TANK



NO	CODE	DESCRIPTION	PATTERN	MODEL	YEAR	OEM	PCS	M3	N.W.	GW	PART LINK
12	8321A095T	FOG LAMP BRACKET LH		TRITON	07	8321A095T	1	0.004	0.17	0.17	
	8321A096T	FOG LAMP BRACKET RH		TRITON	07	8321A096T	1	0.004	0.17	0.17	
13	MN135072T	TANK ASSY,RADIATOR CONDENSER		TRITON	'05-'07	MN135072T					
14	MN182568T	WIND SCREEN WASHER TANK		TRITON	'05-'07	MN182568T					

# MITSUBISHI TRITON '2005-'2008

1 HEAD LAMP COVER MAT

2 HEAD LAMP COVER CHROME

3 HEAD LAMP COVER COLOR



NO	CODE	DESCRIPTION	PATTERN	MODEL	YEAR	OEM	PCS	M3	N.W.	GW	PART LINK
13	MBHC047 LA	HEAD LAMP COVER MAT LH		TRITON	06-08						
	MBHC047 RA	HEAD LAMP COVER MAT RH		TRITON	06-08						
2	MBHC047 RB	HEAD LAMP COVER CHROME RH		TRITON	'06-'08						
	MBHC047 LB	HEAD LAMP COVER CHROME LH		TRITON	06-08						
3	MBHC047 LC	HEAD LAMP COVER COLOR LH		TRITON	06-08						
	MBHC047 RC	HEAD LAMP COVER COLOR RH		TRITON	06-08						

## MITSUBISHI TRITON PLUS '2008-'2010



1 FRONT BUMPER W/O F/F HOLE



2 FRONT BUMPER W/ F.F. HOLE

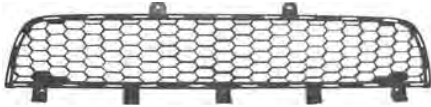


3 F.BUMPER **OEM**



NO	CODE	DESCRIPTION	PATTERN	MODEL	YEAR	OEM	PCS	NW	GW	M3	PART LINK
1	MBB053 NA	FRONT BUMPER W/O F/F HOLE		TRITON PLUS	'09-'10	6400C685T	1	4.00	4.50	0.0600	
2	MBB053 NB	FRONT BUMPER W/ F.F. HOLE		TRITON PLUS	'09-'10	6400C	1	4.00	4.50	0.0600	
3	6400C683ZZT	F.BUMPER	OEM	TRITON PLUS	'10	6400C683ZZT	1	2.40	3.00	0.0600	

4 BUMPER FINISHER PAJERO SPORT / TRITON PLUS



GRILLE CP/BK



GRILLE BK



NO	CODE	DESCRIPTION	PATTERN	MODEL	YEAR	OEM	PCS	NW	GW	M3	PART LINK
4	6402A182T	BUMPER FINISHER	OEM	PAJEROSPORT	'08-'09	6402A182T	1	0.54	1.29	0.0288	
5	MBG053 NA	GRILLE CP/BK		TRITON PLUS	'09-'10	7450A620T	1	1.50	2.00	0.0300	
6	MBG053 NB	GRILLE BK		TRITON PLUS	'09-'10	7450A621T	5	2.00	2.00	0.0400	

7 GRILLE ALL CP



8 HEAD LAMP 4DRS UNIT AMBER



9 HEAD LAMP UNIT CLEAR



NO	CODE	DESCRIPTION	PATTERN	MODEL	YEAR	OEM	PCS	NW	GW	M3	PART LINK
7	MBG053 NC	GRILLE ALL CP		TRITON PLUS	'09-'10	7450A620T	1	2.00	2.00	0.0400	
8	MBHL047 LA	HEAD LAMP 4DRS UNIT AMBER LH		TRITON	'06-'08	8301A011T/20-C230-05-t	4	6.80	10.10	0.1405	
	MBHL047 RA	HEAD LAMP 4DRS UNIT AMBER RH		TRITON	'06-'08	8301A010T/20-C229-05-t	4	6.80	10.10	0.1405	
9	MBHL047 LC	HEAD LAMP UNIT CLEAR LH		TRITON PLUS	'09-'10	8301B549T/20-C230-A5-t	4	6.80	10.10	0.1405	
	MBHL047 RC	HEAD LAMP UNIT CLEAR RH		TRITON PLUS	'09-'10	8301B550T/20-C229-A5-t	4	6.80	10.10	0.1405	

10 HEAD LAMP CLEAR ALL CP



11 HEAD LAMP ASSY



12 FOG LAMP R=L



NO	CODE	DESCRIPTION	PATTERN	MODEL	YEAR	OEM	PCS	NW	GW	M3	PART LINK
10	MBHL053 LA	HEAD LAMP CLEAR ALL CP LH		TRITON PLUS	'09-'10	8301B549T	4	8.00	11.00	0.0000	
	MBHL053 RA	HEAD LAMP CLEAR ALL CP RH		TRITON PLUS	'09-'10	8301B550T	4	8.00	11.00	0.0000	
11	8301B473T	HEAD LAMP ASSY LH	OEM	TRITON PLUS	'09-'10	8301B473T	1	2.45	3.00	0.0799	
	8301B474T	HEAD LAMP ASSY RH	OEM	TRITON PLUS	'09-'10	8301B474T	1	2.45	3.00	0.0799	
12	MBFL053 NA	FOG LAMP R=L		TRITON PLUS	'09-'10		0	0.00	0.00	0.0000	

# MITSUBISHI TRITON PLUS '2008-'2010

## 1 FOG LAMP W/WIRE SET W/O RIM



## 2 FOG LAMP COVER W/O HOLE



## FOG LAMP COVER W/HOLE



NO	CODE	DESCRIPTION	PATTERN	MODEL	YEAR	OEM	PCS	NW	GW	M3	PART LINK
1	MBFL053 SA	FOG LAMP W/WIRE SET W/O RIM		TRITON PLUS	'09-'10	8321A287T	0	0.00	0.00	0.0000	
2	MBFC053 LA	FOG LAMP COVER W/O HOLE LH		TRITON PLUS	'09-'10	8321A253T	10	0.00	0.00	0.0100	
	MBFC053 RA	FOG LAMP COVER W/O HOLE RH		TRITON PLUS	'09-'10	8321A254T	10	0.00	0.00	0.0100	
3	MBFC053 LB	FOG LAMP COVER W/HOLE LH		TRITON PLUS	'09-'10	8321A257T	1	0.25	0.25	0.0100	
	MBFC053 RB	FOG LAMP COVER W/HOLE RH		TRITON PLUS	'09-'10	8321A258T	1	0.25	0.25	0.0100	

## 4 REAR BUMPER REFLECTOR



## 5 BREAK LAMP IN TAIL GATE



## 6 REFLECTOR LAMP



NO	CODE	DESCRIPTION	PATTERN	MODEL	YEAR	OEM	PCS	NW	GW	M3	PART LINK
4	MBBL050 LA	REAR BUMPER REFLECTOR LH		TRITON	'06-'08		1	0.00	0.00	0.0012	
	MBBL050 RA	REAR BUMPER REFLECTOR RH		TRITON	'06-'08		1	0.00	0.00	0.0012	
5	8334A059T	BREAK LAMP IN TAIL GATE	OEM	TRITON	'08	8334A059T	1	0.15	0.50	0.0019	
6	8355A015T	REFLECTOR LAMP LH	OEM	TRITON	'05-'08	8355A015T	1	0.25	0.25	0.0000	
	8355A016T	REFLECTOR LAMP RH	OEM	TRITON	'05-'08	8355A016T	1	0.25	0.25	0.0000	

## 7 TAIL LAMP UNIT



## 8 TAIL LAMP ASSY



## 9 REAR BUMPER SPORT



NO	CODE	DESCRIPTION	PATTERN	MODEL	YEAR	OEM	PCS	NW	GW	M3	PART LINK
7	MBL047 LA	TAIL LAMP UNIT LH		TRITON	'05-'08	8330A009T	10	6.00	8.00	0.0700	
	MBL047 RA	TAIL LAMP UNIT RH		TRITON	'05-'08	8330A010T	10	6.00	8.00	0.0700	
8	MBL047 LB	TAIL LAMP ASSY LH		TRITON	'05-'08	8330A156T	10	6.00	8.00	0.0700	
	MBL047 RB	TAIL LAMP ASSY RH		TRITON	'05-'08	8330A156T	10	6.00	8.00	0.0700	
9	MBIB050 NA	REAR BUMPER SPORT		TRITON	'05-'07		1	8.00	10.00	0.0600	

## 10 FRONT FENDER FLARE 4X4



## 11 REAR FENDER FLARE 4X4



## 12 RADIATOR FAN SHROUD LOWER



NO	CODE	DESCRIPTION	PATTERN	MODEL	YEAR	OEM	PCS	NW	GW	M3	PART LINK
10	7420A100HA	FRONT FENDER FLARE LH 4X4	OEM	TRITON	'08	7420A032HAT	1	1.00	1.20	0.0184	
	7420A099HA	FRONT FENDER FLARE RH 4X4	OEM	TRITON	'08	7420A031HAT/7420A099	1	1.00	1.20	0.0184	
11	7420A113HA	REAR FENDER FLARE LH 4X4	OEM	TRITON	'08	7420A113HAT	1	1.00	1.20	0.0889	
	7420A114HA	REAR FENDER FLARE RH 4X4	OEM	TRITON	'08	7420A114HAT	1	1.00	1.20	0.0889	
12	MN135064	COVER	OEM	TRITON	'07-'08	MN135064	1	0.24	0.25	0.0032	
	MN135064T	RADIATOR FAN SHROUD LOWER	OEM	TRITON	'05-'07	MN135064T	1	0.24	0.25	0.0032	

## 13 RADIATOR COVER LOWER



## 14 BUMPER COVER LOWER



## 15 FRONT BUMPER LOWER GARNISH



NO	CODE	DESCRIPTION	PATTERN	MODEL	YEAR	OEM	PCS	NW	GW	M3	PART LINK
13	MN135065	RADIATOR COVER LOWER	OEM	TRITON	'08	MN135065	1	0.24	0.25	0.0032	
14	6400C207T	BUMPER COVER LOWER	OEM	TRITON PLUS	'09-'10	6400C207T	1	1.00	1.00	0.0300	
15	6400C208T	FRONT BUMPER LOWER GARNISH	OEM	TRITON	'09	6400C208T	1	1.00	1.00	0.0300	

# MITSUBISHI TRITON PLUS '2008-'2010

## SIDE PANEL LH



## 2 SIDE PANEL 4 DOOR RH W/FLARE HOLE SPORT BUMPER



## 3 ROOF INNER CUSHION



NO	CODE	DESCRIPTION	PATTERN	MODEL	YEAR	OEM	PCS	NW	GW	M3	PART LINK
1	6722A059T	SIDE PANEL LH		TRITON PLUS	'10	6722A059T	1	15.00	18.00	0.5419	
2	6722A060VT	SIDE PANEL 4 DOOR RH W/FLARE HOLE SPORT BUMPER		TRITON DOUBLE PLUS	'08-'09	6722A060VT	1	15.00	18.00	0.5419	
	7200A193	ROOF INNER CUSHION		TRITON	'08	7200A193HAVT	1	1.10	3.25	0.3424	

## 4 FRONT INNER FENDER FRONT PART( BIG) 2/4 WD



## 5 FRONT INNER FENDER 2/4 WD REAR PART SMALL



NO	CODE	DESCRIPTION	PATTERN	MODEL	YEAR	OEM	PCS	NW	GW	M3	PART LINK
4	MBIF047 LA	FRONT INNER FENDER FRONT PART( BIG) 2/4 WD LH		TRITON	'06-'09	5370A277T	10	4.00	5.00	0.0400	
	MBIF047 RA	FRONT INNER FENDER FRONT PART( BIG) 2/4 WD RH		TRITON	'06-'09	5370A278T	10	4.00	5.00	0.0400	
5	MBIF047 LB	FRONT INNER FENDER 2/4 WD REAR PART SMALL		TRITON	'06-'10	5370A275T	10	2.00	3.00	0.0300	
	MBIF047 RB	FRONT INNER FENDER 2/4 WD REAR PART (SMALL)		TRITON	'06-'10	5370A276T	10	2.00	3.00	0.0300	
6	MBIF047 R LA	REAR INNER FENDER 2/4WD 4 DOOR LH		TRITON	'06-'10	5370A281T	10	2.00	3.00	0.0300	
	MBIF047 R RA	REAR INNER FENDER 2/4 WD 4 DOOR RH		TRITON	'06-'10	5370A282T	10	2.00	3.00	0.0300	

## 7 REAR INNER FENDER 2/4WD CAP/SPACE CAP



## 8 SIDE STEP ALUMINIUM OEM TYPE



NO	CODE	DESCRIPTION	PATTERN	MODEL	YEAR	OEM	PCS	NW	GW	M3	PART LINK
7	5370A279T	REAR INNER FENDER 2/4WD CAP/SPACE CAP LH		TRITON	'06-'10	5370A279T	10	2.00	3.00	0.0300	
	5370A280T	REAR INNER FENDER 2/4WD CAP/SPACE CAP RH		TRITON	'06-'10	5370A280T	10	2.00	3.00	0.0300	
8	ST016 MB	SIDE STEP ALUMINIUM OEM TYPE		TRITON	'06-'08		1	5.00	6.00	0.0541	
9	ST054 MB	SIDE STEP 1.71 OEM TYPE CHASIS TYPE		TRITON PLUS	'06-'10		1	8.00	10.00	0.0600	

## 10 SUNROOF SHEILD GUARD



## 11 REAR WINDSCREEN GLASS



## 12 FRONT BUMPER GUARD STEEL TUBE FRAME



NO	CODE	DESCRIPTION	PATTERN	MODEL	YEAR	OEM	PCS	NW	GW	M3	PART LINK
10	5850A052	SUNROOF SHEILD GUARD		TRITON	'08	5850A052HA	1	0.57	2.00	0.0052	
11	6131A003	REAR WINDSCREEN GLASS LH		TRITON	'06-'08	70-6131A003T A	1	1.18	1.58	0.0105	
	6131A004	REAR WINDSCREEN GLASS RH		TRITON	'06-'08	6131A004	1	1.18	1.58	0.0105	
12	FG-131AA MB	FRONT BUMPER GUARD STEEL TUBE FRAME		TRITON	'06-'08		1	0.00	0.00	0.0000	

## 13 REAR WINDSCREEN GLASS CENTER



## 14 FRONT WINDSCREEN GLASS



## 15 GASKET CYLINDER HEAD



NO	CODE	DESCRIPTION	PATTERN	MODEL	YEAR	OEM	PCS	NW	GW	M3	PART LINK
13	6131A005T	REAR WINDSCREEN GLASS CENTER		TRITON	'06-'08	6131A005T	1	3.00	3.50	0.0109	
14	6102A579T	FRONT WINDSCREEN GLASS		TRITON	'08	6102A579T	1	0.00	0.00	0.0000	
15	1005A205	GASKET CYLINDER HEAD		TRITON	'06-'08	1005A205T	1	1.00	1.00	0.0300	

# MITSUBISHI TRITON PLUS '2008-'2010

## 1 GASKET CYLINDER HEAD



## 2 ROOF PANEL INNER FRONT SINGLE CAB



## 3 SILL BODY LOWER RH DOUBLE CAB



NO	CODE	DESCRIPTION	PATTERN	MODEL	YEAR	OEM	PCS	NW	GW	M3	PART LINK
1	1005A207	GASKET CYLINDER HEAD		TRITON	'06-'08	1005A207	1	0.20	0.30	0.0012	
2	5290A492	ROOF PANEL INNER FRONT SINGLE CAB		TRITON	'06	5290A492	0	0.00	0.00	0.0000	
3	5253A937T	SILL BODY LOWER LH DOUBLE CAB		TRITON	'07-'08	5253A937T	1	5.00	5.30	0.1567	
	5253A938T	SILL BODY LOWER RH DOUBLE CAB		TRITON	'07-'08	5253A938T	1	5.00	5.30	0.1567	

## 4 UPPER INSERT ABS PARTS



## 5 UPPER INSERT CHROME PLATING( CR+3)



## 6 LOWER INSERT ABS PARTS



NO	CODE	DESCRIPTION	PATTERN	MODEL	YEAR	OEM	PCS	NW	GW	M3	PART LINK
4	MISC3127-2 NA	UPPER INSERT ABS PARTS		L200	'09		10	0.23	3.34	0.0471	
5	MISC3127-2 NB	UPPER INSERT CHROME PLATING( CR+3)		L200	'09		10	0.23	3.34	0.0500	
6	MISC3127-3 NA	LOWER INSERT ABS PARTS		L200	'09		5	0.71	7.50	0.1400	

## 7 LOWER INSERT CHROME PLATING ( CR+3)



## 8 AIR GUIDE PANEL



## 9 F. BUMPER REINFORCEMENT SINGLE DOUBLE



NO	CODE	DESCRIPTION	PATTERN	MODEL	YEAR	OEM	PCS	NW	GW	M3	PART LINK
7	MISC3127-3 NB	LOWER INSERT CHROME PLATING ( CR+3)		L200	'09		5	0.71	7.91	0.1400	
8	1360A007	AIR GUIDE PANEL		TRITON	'08	1360A007	1	0.50	0.16	0.0009	
9	6400C158T	F. BUMPER REINFORCEMENT SINGLE DOUBLE		TRITON	'09-'11	6400C158T	1	2.86	2.86	0.0400	

## 10 REAR ROOF RAIL



## 11 ROOF BOW



## 12 HEAD LAMP BRACKET



NO	CODE	DESCRIPTION	PATTERN	MODEL	YEAR	OEM	PCS	NW	GW	M3	PART LINK
10	5290A494T	REAR ROOF RAIL		TRITON	'08	5290A494T	1	0.55	0.55	0.0028	
11	5290A496T	ROOF BOW		TRITON	'08	5290A496T	1	0.48	0.48	0.0023	
	5290A497T	ROOF BOW		TRITON	'08	5290A497T	1	0.48	0.48	0.0023	
12	MN167867T	HEAD LAMP BRACKET LH		TRITON	'08	MN167867T	1	0.03	0.04	0.0003	
	MN167868T	HEAD LAMP BRACKET RH		TRITON	'08	MN167868T	1	0.03	0.04	0.0003	

## 13 FRONT MUD FLAP



## 14 REAR MUD FLAP



## 15 STAY



NO	CODE	DESCRIPTION	PATTERN	MODEL	YEAR	OEM	PCS	NW	GW	M3	PART LINK
13	MN117447	FRONT MUD FLAP LH		TRITON	'07-'08	MN117447T	1	0.38	0.41	0.0089	
	MN117448	FRONT MUD FLAP RH		TRITON	'07-'08	MN117448T	1	0.38	0.41	0.0089	
14	MN117449	REAR MUD FLAP LH		TRITON	'07-'08	MN117449/5370A837T	1	0.27	0.30	0.0038	
	MN117450	REAR MUD FLAP RH		TRITON	'07-'08	5370A838 T 001	1	0.27	0.30	0.0038	
15	MN146314T	STAY LH		TRITON	'07-'08	MN136314T	1	0.48	0.48	0.0046	
	MN146313T	STAY RH		TRITON	'07-'08	MN146313T	1	0.48	0.48	0.0046	

## 16 DRIVE SHAFT ASSY AXLE ABS



## 17 PROPELLER SHAFT 4X4 MANUAL



## 18 PROPELLER SHAFT 4X4 AUTO

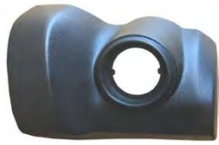


NO	CODE	DESCRIPTION	PATTERN	MODEL	YEAR	OEM	PCS	NW	GW	M3	PART LINK
16	MN107606	DRIVE SHAFT ASSY AXLE RH ABS		TRITON	'06-'08	MN107606/31815A308VT	1	6.30	6.80	0.0121	
17	3401A425T	PROPELLER SHAFT 4X4 MANUAL		TRITON	'09	3401A425T	1	6.00	6.00	0.0082	
18	3401A428T	PROPELLER SHAFT 4X4 AUTO		TRITON	'09	3401A428T	1	6.00	6.00	0.0082	



# MITSUBISHI TRITON PLUS '2008-'2010

## 1 REAR SIDE BUMPER



## 2 BODY ASSY AIR CLEANER



## 3 RESERVOIR ASSY



NO	CODE	DESCRIPTION	PATTERN	MODEL	YEAR	OEM	PCS	NW	GW	M3	PART LINK
1	MBSB050 LA	REAR SIDE BUMPER LH W/HOLE		TRITON	'06-'08	6410A741T	1	0.00	0.00	0.0161	
	MBSB050 RA	REAR SIDE BUMPER RH W/HOLE		TRITON	'06-'08	6410A742T	1	0.00	0.00	0.0161	
2	MN135613T	BODY ASSY AIR CLEANER		TRITON	'05-'07	MN135613T	1	0.61	1.28	0.0264	
3	MR995028T	RESERVOIR ASSY		TRITON	'07-'08	MR995028T	1	0.16	0.17	0.0022	

## 4 AIR FILTER HOSE



## 5 DUCT AIR CLEANER 2500CC



## 6 F.DOOR MOULDING



## 7 R.DOOR MOULDING



NO	CODE	DESCRIPTION	PATTERN	MODEL	YEAR	OEM	PCS	NW	GW	M3	PART LINK
4	1505A131	AIR FILTER HOSE		TRITON	'08	1505A131T	1	0.32	0.36	0.0080	
5	MN171012	DUCT AIR CLEANER 2500CC		TRITON	'08	MN171012T	1	0.48	0.49	0.0030	
6	MN117414WCT	F.DOOR MOULDING RH		TRITON	'08-'10	MN117414WCT	1	0.00	0.00	0.0200	
7	MN117417WBT	R.DOOR MOULDING LH		TRITON	'08-'10	MN117417WBT	1	0.00	0.00	0.0200	
	MN117418WBT	R.DOOR MOULDING RH		TRITON	'08-'10	MN117418WBT	1	0.00	0.00	0.0200	

## 8 FRONT DOOR GLASS RUBBER MOUDLING



## 10 GRILLE A/C LAP HEATER DUCT



## 11 SHROUD A/C



## 9 REAR DOOR GLASS RUBBER MOULDING



NO	CODE	DESCRIPTION	PATTERN	MODEL	YEAR	OEM	PCS	NW	GW	M3	PART LINK
8	MN117611	FRONT DOOR GLASS RUBBER MOUDLING LH		TRITON	'08	MN117611T	1	0.40	0.45	0.0003	
	MN117612	FRONT DOOR GLASS RUBBER MOUDLING RH		TRITON	'08	MN117612T	1	0.40	0.45	0.0003	
9	MN117615	REAR DOOR GLASS RUBBER MOULDING LH		TRITON	'08	MN117615T	1	0.40	0.45	0.0003	
	MN117616	REAR DOOR GLASS RUBBER MOULDING RH		TRITON	'08	MN117616T	1	0.40	0.45	0.0003	
10	7812A102T	GRILLE A/C LAP HEATER DUCT		TRITON	'07-'08	7812A102T	1	0.14	0.15	0.0003	
11	7812A099T	SHROUD A/C		TRITON	'07-'08	7812A099T	1	0.34	0.35	0.0054	

## 12 ENGINE BAN BLADE



## 13 DOOR HANDLE INSERT 4DR



## 14 TAIL GATE HANDLE COVER WITH HOUSING INSERT MAT

NO	CODE	DESCRIPTION	PATTERN	MODEL	YEAR	OEM	PCS	NW	GW	M3	PART LINK
12	1320A015T	ENGINE BAN BLADE		TRITON	'06-'09	1320A015T	20	8.00	10.00	0.1300	
13	MBDI047 SB	DOOR HANDLE INSERT 4DR		TRITON	'06-'08		1	0.17	0.23	0.0016	
14	MBRC047 NA	TAIL GATE HANDLE COVER WITH HOUSING INSERT MAT		TRITON 4DR	'07-'08		1	0.00	0.00	0.0000	

## 15 TAIL GATE HANDLE COVER WITH HOUSING INSERT CHROME



## 16 TAIL GATE HANDLE COVER WITH HOUSING INSERT COLOR

NO	CODE	DESCRIPTION	PATTERN	MODEL	YEAR	OEM	PCS	NW	GW	M3	PART LINK
15	MBRC047 NB	TAIL GATE HANDLE COVER WITH HOUSING INSERT CHROME		TRITON 4DR	'07-'08		1	0.10	0.21	0.0022	
16	MBRC047 NC	TAIL GATE HANDLE COVER WITH HOUSING INSERT COLOR		TRITON 4DR	'07-'08		1	0.00	0.00	0.0000	

# MITSUBISHI TRITON MEGA PLUS '2009-'2010



1 FRONT BUMPER W/O F/F HOLE



2 FRONT BUMPER W/F.F. HOLE



3 BUMPER FINISHER



NO	CODE	DESCRIPTION	PATTERN	MODEL	YEAR	OEM	PCS	M3	N.W.	GW	PART LINK
1	MBB053 NA	FRONT BUMPER W/O F/F HOLE	R.E.M.	TRITON PLUS	'09-'10	6400C685T	1	0.0600	4.00	4.50	
2	MBB053 NB	FRONT BUMPER W/ F.F. HOLE		TRITON PLUS	'09-'10	6400C684WAT	1	0.0600	4.00	4.50	
3	MBBF057 NA	BUMPER FINISHER		TRITON PLUS / PAJERO SPORT	'09-'10	6402A182T	1	0.0300	1.00	1.00	

4 GRILLE CP/BK/SV



5 GRILLE ALL CP



6 GRILLE PAJERO STYLE CP/BK **NEW!!!**



NO	CODE	DESCRIPTION	PATTERN	MODEL	YEAR	OEM	PCS	M3	N.W.	GW	PART LINK
4	<b>MBG054 NA</b>	GRILLE CP/BK/SV		TRITON PLUS	09-'10	7450A683XAT	1	0.0400	2.00	2.00	
5	MBG054 NC	GRILLE CP		TRITON PLUS	09-10	7450A683XAT	5	0.1025	2.00	2.00	
6	MBG054 NM	GRILLE PAJERO STYLE CP/BK		TRITON PLUS	12-13						

7 GRILLE ALL CP (MODIFY) **NN**



8 HEAD LAMP ASS'Y



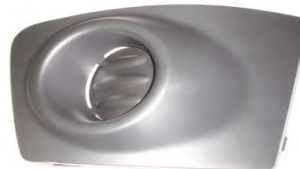
9

NO	CODE	DESCRIPTION	PATTERN	MODEL	YEAR	OEM	PCS	M3	N.W.	GW	PART LINK
7	MBG054 NN	GRILLE ALL CP (MODIFY)		TRITON PLUS	09-10		1	0.03	2.00	3.00	
8	8301B473T	HEAD LAMP ASSY LH	O.E.M.	TRITON PLUS	'09-'10	8301B473T	1	0.0400	2.00	2.00	
	8301B474T	HEAD LAMP ASSY RH	O.E.M.	TRITON PLUS	'09-'10	8301B474T	1	0.0400	2.00	2.00	

10 FOG LAMP ( R = L )



11 FOG LAMP COVER W/O HOLE



12 FOG LAMP COVER W/HOLE



NO	CODE	DESCRIPTION	PATTERN	MODEL	YEAR	OEM	PCS	M3	N.W.	GW	PART LINK
10	MBFL053 NA	FOG LAMP R=L		TRITON PLUS	'09-'10	8321A278T	1	0.0200	1.00	1.00	
	MBFL053 SA	FOG LAMP SETS R/L WITH COVER 2 PCS		TRITON PLUS	'09-'10	8321A278T	1	0.0300	2.00	3.00	
11	MBFC053 LA	FOG LAMP COVER W/O HOLE LH		TRITON PLUS	'09-'10	8321A257T	1	0.0100	0.25	0.25	
	MBFC053 RA	FOG LAMP COVER W/O HOLE RH		TRITON PLUS	'09-'10	8321A258T	1	0.0100	0.25	0.25	
12	MBFC053 LB	FOG LAMP COVER W/HOLE LH		TRITON PLUS	'09-'10	8321A257T					
	MBFC053 RB	FOG LAMP COVER W/HOLE RH		TRITON PLUS	'09-'10	8321A258T					

# MITSUBISHI TRITON MEGA PLUS '2009-'2010

## 1 FOG LAMP COVER **OEM**



## 2 REAR BUMPER PLASTIC TYPE



## 3 TAIL GATE HIGH CAB



NO	CODE	DESCRIPTION	PATTERN	MODEL	YEAR	OEM	PCS	M3	N.W.	GW	PART LINK
1	8321A254T	FOG LAMP COVER RH		TRITON	11-12	8321A254T					
	8321A253T	FOG LAMP COVER LH		TRITON	11-12	8321A253T					
2	6410B586ZZT	REAR BUMPER PKASTIC TYPE		TRITON PLUS	09-'10	6410B586ZZT	1	0.1951	1.90	5.55	
3	6724A028VT	TAIL GATE HIGH CAB		TRITON PLUS	09-'10	6724A028VT	1	0.0600	8.00	10.00	

## 4 SIDE PANEL 4WD W/ F.F HOLE HIGH CAB LH



## 5 SIDE PANEL 4 DOOR RH W/FLARE HOLE SPORT BUMPER



## 6 PLASTIC COVER REAR BUMPEER CENTER



NO	CODE	DESCRIPTION	PATTERN	MODEL	YEAR	OEM	PCS	M3	N.W.	GW	PART LINK
4	6722A159VT	SIDE PANEL 4WD W/ F.F HOLE HIGH CAB LH		TRITON PLUS	09-'11	6722A159VT	1	0.1500	15.00	18.00	
5	6722A160VT	SIDE PANEL 4 DOOR RH W/FLARE HOLE SPORT BUMPER		TRITON PLUS	09-'11	6722A160VT	1		15.00	18.00	
6	6420A006T	PLASTIC COVER REAR BUMPEER CENTER		TRITON PLUS	09-'10	6420A006T	1	0.0024	0.16	0.28	

## 7 PLASTIC COVER BUMPER



## 8 BUMPER COVER LOWER



## 9 REAR BUMPER REINFORCEMENT



NO	CODE	DESCRIPTION	PATTERN	MODEL	YEAR	OEM	PCS	M3	N.W.	GW	PART LINK
7	6420A007T	PLASTIC COVER BUMPER LH		TRITON PLUS	09-'10	6420A007T	1	0.0052	0.14	0.34	
	6420A008T	PLASTIC COVER BUMPER RH		TRITON PLUS	09-'10	6420A008T	1	0.0052	0.14	0.34	
8	6400C207T	BUMPER COVER LOWER		TRITON PLUS	'09-'10	6400C207T	1	0.0300	1.00	1.00	
	MBSP053 NA	BUMPER COVER LOWER		TRITON PLUS	'09-'10	6400C207T	1	0.0300	1.00	1.00	
9	6410B327T A	REAR BUMPER REINFORCEMENT		TRITON PLUS	09-10	6410B327T					

## 10 DRIVER SIDE AIRBAG

## 11 SUPPORT FRONT BRAKE CALIPER



## 12 FUEL DOOR COVER



NO	CODE	DESCRIPTION	PATTERN	MODEL	YEAR	OEM	PCS	M3	N.W.	GW	PART LINK
10	MR992559XAT	DRIVER SIDE AIRBAG		TRITON PLUS	'09	MR992559XAT	0	0.0000	0.00	0.00	
11	4605A128	SUPPORT FRONT BRAKE CALIPER LA		TRITON	10-12	4605A128	1	0.0074	2.00	2.15	
	4605A173T	SUPPORT FRONT BRAKE CALIPER RH		TRITON	10-12	4605A173T	1	0.0074	2.00	2.15	
12	5940A031T	FUEL DOOR COVER		TRITON PLUS	'09	5940A031T	0	0.0000	0.00	0.00	

# MITSUBISHI L300 '1987-'1999 / '1999-'2005



**1 FRONT BUMPER BK NA**



**2 FRONT BUMPER WT NB**



**3 GRILLE WT-R**



NO	CODE	DESCRIPTION	PATTERN	MODEL	YEAR	OEM	PCS	M3	N.W.	GW	PART LINK
1	MBB065 NA	FRONT BUMPER BK		MITSUBISHI L300	'99-'05	MR468836	1	0.0600	4.50	5.00	
2	MBB065 NB	FRONT BUMPER WT		MITSUBISHI L300	'99-'05	MR606740	1	0.0600	4.50	5.00	
3	MBG065 NA	GRILLE WT-R		L300	'99-'01	MR606737					

**4 GRILLE BK**



**5 GRILLE BK / CP MOULDING**



**6 HEAD LIGHT DOOR**



NO	CODE	DESCRIPTION	PATTERN	MODEL	YEAR	OEM	PCS	M3	N.W.	GW	PART LINK
4	MBG065 NB	GRILLE BK		L300		MR478080					
5	MBG033 NA	GRILLE BK / CP MOULDING		MITSUBISHI L300	'87-'99	MB418073					
6	MBD033 RA	HEAD LIGHT DOOR RH		MITSUBISHI L300	'87-'99	MB527294					
	MBD033 LA	HEAD LIGHT DOOR LH		MITSUBISHI L301	'87-'99	MB527293					

# MITSUBISHI L400 '1998-'2002



**1 FONT BUMPER L400**



**2 REAR BUMPER L400**



**REAR BUMPER L400**



NO	CODE	DESCRIPTION	PATTERN	MODEL	YEAR	OEM	PCS	M3	N.W.	GW	PART LINK
1	MBB055 NA	F.BUMPER W/O FOG LAMP HOLE	BK	MITSUBISHI L400	'98-'00	MR376027	5	0.4000	20.00	22.00	
	MBB055 NB	F.BUMPER W/ FOG LAMP HOLE	BK	MITSUBISHI L400	'98-'00		5	0.4000	20.00	22.00	
2	MBB056 NA	REAR BUMPER W/O SENSOR HOLE	BK	MITSUBISHI L400	'98-'00		5	0.4000	20.00	22.00	
	MBB056 NB	REAR BUMPER W/ SENSOR HOLE	BK	MITSUBISHI L400	'98-'00		5	0.4000	20.00	22.00	

**3 GRILLE L400**



**4 GRILLE L400 W/ CP MOULDING**



**5 HEAD LAMP**



NO	CODE	DESCRIPTION	PATTERN	MODEL	YEAR	OEM	PCS	M3	N.W.	GW	PART LINK
3	MBG055 NA	GRILLE W/O HOLE	BK	MITSUBISHI L400	'98-'00	MR376019	5	0.1500	6.00	8.00	
4	MBG055 NB	GRILLE W/CP MOULDING	BK	MITSUBISHI L400	'00-'02		5	0.1000	10.00	12.00	
5	MBHL055 RA	HEAD LAMP RH		MITSUBISHI L400	'98-'00	MB418073	4	0.1577	6.00	8.00	
	MBHL055 LA	HEAD LAMP LH		MITSUBISHI L400	'98-'00		4	0.1577	6.00	8.00	

**6 CORNER LAMP**



**7 REFLECTOR TAIL LAMP**



**8 TAIL LAMP**



NO	CODE	DESCRIPTION	PATTERN	MODEL	YEAR	OEM	PCS	M3	N.W.	GW	PART LINK
6	MBCL055 RA	CORNER LAMP RH		MITSUBISHI L400	'98-'00		20	0.1105	8.00	10.00	
	MBCL055 LA	CORNER LAMP LH		MITSUBISHI L400	'98-'00		20	0.1105	8.00	10.00	
7	MBRL055 RA	REFLECTOR TAIL LAMP RH		MITSUBISHI L400	'98-'00		20	0.1541	10.00	12.00	
	MBRL055 LA	REFLECTOR TAIL LAMP LH		MITSUBISHI L400	'98-'00		20	0.1541	10.00	12.00	
8	MBL055 RA	TAIL LAMP RH		MITSUBISHI L400	'98-'00		10	0.0851	6.00	8.00	
	MBL055 LA	TAIL LAMP LH		MITSUBISHI L400	'98-'00	MB418073	10	0.0851	6.00	8.00	

**9 FRONT LAMP**



**10 FOG LAMP**



**11 SIDE LAMP**



NO	CODE	DESCRIPTION	PATTERN	MODEL	YEAR	OEM	PCS	M3	N.W.	GW	PART LINK
9	MBFL055 RA	FRONT LAMP RH CLEAR		MITSUBISHI L400	'98-'00		20	0.0704	6.00	8.00	
	MBFL055 LA	FRONT LAMP LH CLEAR		MITSUBISHI L400	'98-'00		20	0.0704	6.00	8.00	
10	MBFC055 RA	FOG LAMP RH		MITSUBISHI L400	'98-'00		12	0.0873	8.00	10.00	
	MBFC055 LA	FOG LAMP LH		MITSUBISHI L400	'98-'00		12	0.0873	8.00	10.00	
11	MBSL055 NA	SIDE LAMP CLEAR		MITSUBISHI L400	'98-'00		100	0.1452	12.00	14.00	

# MITSUBISHI OUTLANDER '2005-'2006



1 FRONT BUMPER

2 REAR BUMPER

3 GRILLE



NO	CODE	DESCRIPTION	PATTERN	MODEL	YEAR	OEM	PCS	M3	N.W.	GW	PART LINK
1	MBB071 NA	F. BUMPER		OUTLANDER	'05-'06	MN133214	1	0.0000	0.00	0.00	
2	MBB072 NA	R. BUMPER		OUTLANDER	'05-'06	MN133226	1	0.0000	0.00	0.00	
	MBB072 SP	BUMPER COVER LOWER BACK		OUTLANDER	03-05						
3	MBG071 RA	GRILLE RH		OUTLANDER	'05-'06	MN133230					
	MBG071 LA	GRILLE LH		OUTLANDER	'05-'06	MN133229					

4 HEAD LAMP

5 FOG LAMP

6 TAIL LAMP



NO	CODE	DESCRIPTION	PATTERN	MODEL	YEAR	OEM	PCS	M3	N.W.	GW	PART LINK
4	MBHL071 RA	HEAD LAMP RH		OUTLANDER	'05-'06						
	MBHL071 LA	HEAD LAMP LH		OUTLANDER	'05-'06						
5	MBFL071 RA	FOG LAMP RH		OUTLANDER	'05-'06		20	0.0704	8.00	10.00	
	MBFL071 LA	FOG LAMP LH		OUTLANDER	'05-'06		20	0.0704	8.00	10.00	
6	MBL071 RA	TAIL LAMP RH		OUTLANDER	'05-'06		10	0.1000	8.00	10.00	
	MBL071 LA	TAIL LAMP LH		OUTLANDER	'05-'06		10	0.1000	8.00	10.00	

7 SIDE LAMP

8 REAR BUMPER LAMP

9 DOOR MIRROR CHROME

**\*\*NEW\*\***



NO	CODE	DESCRIPTION	PATTERN	MODEL	YEAR	OEM	PCS	M3	N.W.	GW	PART LINK
7	MBSL071 RA	SIDE LAMP RH		OUTLANDER	'05-'06						
	MBSL071 LA	SIDE LAMP LH		OUTLANDER	'05-'06						
8	MBBL072 RA	REAR BUMPER LAMP RH		OUTLANDER	'05-'06						
	MBBL072 LA	REAR BUMPER LAMP LH		OUTLANDER	'05-'06						
9	MBMR071 LB	DOOR MIRROR CHROME LH		OUTLANDER	03-05		10	0.1847	18.00	20.00	
	MBMR071 RB	DOOR MIRROR CHROME RH		OUTLANDER	03-05		10	0.1847	18.00	20.00	

10 FENDER

11 HOOD

12 BUMPER COVER LOWER FRONT



NO	CODE	DESCRIPTION	PATTERN	MODEL	YEAR	OEM	PCS	M3	N.W.	GW	PART LINK
10	MBF071 RA	FENDER RH		OUTLANDER	'05-'06	MN133586					
	MBF071 LA	FENDER LH		OUTLANDER	'05-'06	MR990117					
11	MBH071 NA	HOOD		OUTLANDER	'05-'06	MN133595					
12	MBB071 SP	BUMPER COVER LOWER FRONT		OUTLANDER	03-05		25	0.1286	13.00	15.00	

# MITSUBISHI OUTLANDER '2005-'2006

## 1 RADIATOR SUPPORT



## 2 FOG LAMP COVER



## 3 FOG LAMP HOUSING INNER



NO	CODE	DESCRIPTION	PATTERN	MODEL	YEAR	OEM	PCS	M3	N.W.	GW	PART LINK
1	MBR071 NA	RADIATOR SUPPORT		OUTLANDER	'05-'06	MN133539					
2	MBFC071 RA	FOG LAMP COVER RH		OUTLANDER	'03-'05	MN133252					
	MBFC071 LA	FOG LAMP COVER LH		OUTLANDER	'03-'05	MN133251					
3	MBFI071 RA	FOG LAMP HOUSING INNER RH		OUTLANDER	'03-'05	MN133274					
	MBFI071 LA	FOG LAMP HOUSING INNER LH		OUTLANDER	'03-'05	MN133273					

## 4 MUD FLAP FRONT

**\*\*NEW\*\***



## 5 MUD FLAP REAR

**\*\*NEW\*\***



## 6 SIDE SKIRT

**\*\*NEW\*\***



NO	CODE	DESCRIPTION	PATTERN	MODEL	YEAR	OEM	PCS	M3	N.W.	GW	PART LINK
4	MBMG071 F LA	MUD FLAP FRONT LH		OUTLANDER	03-05		50	0.1847	20.00	21.00	
	MBMG071 F RA	MUD FLAP FRONT RH		OUTLANDER	03-05		50	0.1847	20.00	21.00	
5	MBMG071 R LA	MUD FLAP REAR LH		OUTLANDER	03-05		50	0.1847	20.00	21.00	
	MBMG071 R RA	MUD FLAP REAR RH		OUTLANDER	03-05		50	0.1847	20.00	21.00	
6	MBSK071 LA	SIDE SKIRT LH		OUTLANDER	03-05						
	MBSK071 RA	SIDE SKIRT RH		OUTLANDER	03-05						

## 7 BUMPER REINFORCEMENT MIDDLE



## 8 BUMPER REINFORCEMENT BACK



## 9 INNER FENDER



NO	CODE	DESCRIPTION	PATTERN	MODEL	YEAR	OEM	PCS	M3	N.W.	GW	PART LINK
7	MBBR071 CA	BUMPER REINFORCEMENT MIDDLE		OUTLANDER	03-05		25	0.0643	15.00	17.00	
8	MBBR072 NA	BUMPER REINFORCEMENT BACK		OUTLANDER	03-05		10	0.0643	15.00	17.00	
9	MBIF071 LA	INNER LINNG		OUTLANDER	03-05		50	12.0000	14.00	0.18	
	MBIF071 RA	INNER LINNG		OUTLANDER	03-05		50	12.0000	14.00	0.18	

## 10 WIND SHIELD WASHER

NO	CODE	DESCRIPTION	PATTERN	MODEL	YEAR	OEM	PCS	M3	N.W.	GW	PART LINK
10	MBWW071 NA	WIND SHIELD WASHER		OUTLANDER	03-05						

# MITSUBISHI OUTLANDER '2007-'2009



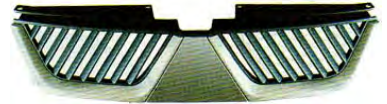
## 1 FRONT BUMPER



## 2 REAR BUMPER



## 3 GRILLE



NO	CODE	DESCRIPTION	PATTERN	MODEL	YEAR	OEM	PCS	M3	N.W.	GW	PART LINK
1	MBB073 NA	FRONT BUMPER		OUTLANDER	07-09	6400B829HA					
2	MBB074 NA	REAR BUMPER		OUTLANDER	08	6400A781	1	0.0323	3.50	4.00	
3	MBG073 NA	GRILLE		OUTLANDER	07-09						

## 4 BUMPER FINISHER



## 5 HEAD LAMP



## 6 FOG LAMP



NO	CODE	DESCRIPTION	PATTERN	MODEL	YEAR	OEM	PCS	M3	N.W.	GW	PART LINK
4	MBBF073 NA	FRONT BUMPER FINISHER		OUTLANDER	07-09	6400A738					
5	MBHL073 RA	HEAD LAMP RH		OUTLANDER	07-09	8301A706					
	MBHL073 LA	HEAD LAMP LH		OUTLANDER	07-09	8301A705					
6	MBFL073 RA	FOG LAMP RH		OUTLANDER	07-09	MN142091					
	MBFL073 LA	FOG LAMP LH		OUTLANDER	07-09						

## 7 TAIL LAMP OUTER



## 8 REFLECTOR TAIL LAMP



## 9 SIDE LAMP

**\*\*NEW\*\***



NO	CODE	DESCRIPTION	PATTERN	MODEL	YEAR	OEM	PCS	M3	N.W.	GW	PART LINK
7	MBL073 RA	TAIL LAMP RH		OUTLANDER	07-09	8330A396					
	MBL073 LA	TAIL LAMP LH		OUTLANDER	07-09	8330A395					
8	MBRL073 RA	REFLECTOR TAIL LAMP RH		OUTLANDER	07-09	8331A072					
	MBRL073 LA	REFLECTOR TAIL LAMP LH		OUTLANDER	07-09	8331A071					
9	MBSL073 LA	SIDE LAMP LH		OUTLANDER	08						
	MBSL073 RA	SIDE LAMP RH		OUTLANDER	08						

## 10 REAR BUMPER LAMP



RA



LA

## 11 DOOR MIRROR



NO	CODE	DESCRIPTION	PATTERN	MODEL	YEAR	OEM	PCS	M3	N.W.	GW	PART LINK
10	MBBL074 RA	REAR BUMPER LAMP RH		OUTLANDER	07-09	8355A004					
	MBBL074 LA	REAR BUMPER LAMP LH		OUTLANDER	07-09	8337A015					
11	MBMR073 RA	DOOR MIRROR RH		OUTLANDER	07-09	7632A552					
	MBMR073 LA	DOOR MIRROR LH		OUTLANDER	07-09	7632A551					

## 12 REAR SIDE BUMPER



## 13 BUMPER CORNER FRONT



## 14 FRONT BUMPER LOWER CENTER



NO	CODE	DESCRIPTION	PATTERN	MODEL	YEAR	OEM	PCS	M3	N.W.	GW	PART LINK
12	MBS074 RA	REAR SIDE BUMPER RH		OUTLANDER	07-09	6410A218HA					
	MBS074 LA	REAR SIDE BUMPER LH		OUTLANDER	07-09	6410A217HA					
13	MBP073 LA	BUMPER CORNER FRONT LH		OUTLANDER	08	6400A470	50	0.1847	17.00	18.00	
	MBP073 RA	BUMPER CORNER FRONT RH		OUTLANDER	08	6400A470	50	0.1847	17.00	18.00	
14	MBB073 LA	FRONT BUMPER LOWER CENTER		OUTLANDER	07-09	6400A738					



# MITSUBISHI OUTLANDER '2007-'2009

## 1 SPOILER



## 2 CONDENSER



## 3 FRONT BUMPER PROTECT ANGLE DOWN



NO	CODE	DESCRIPTION	PATTERN	MODEL	YEAR	OEM	PCS	M3	N.W.	GW	PART LINK
1	MBBP073 NA	SPOILER		OUTLANDER	'08	5817A022HA	25	0.1915	18.00	20.00	
2	MISC2494 RB	DOOR MIRROR COVER RH Chr3+		OUTLANDER	'07	MISC2494 RB					
	MISC2494 LB	DOOR MIRROR COVER LH Chr3+		OUTLANDER	'07	MISC2494 LB					
3	MBFC073 RA	FRONT BUMPER PROTECT ANGLE DOWN		OUTLANDER	'08	6400A471					
	MBFC073 LA	FRONT BUMPER PROTECT ANGLE DOWN		OUTLANDER	'08	6400A470					

## 4 CONDENSER



## 5 MUD FLAP FRONT



## 6 MUD FLAP REAR



NO	CODE	DESCRIPTION	PATTERN	MODEL	YEAR	OEM	PCS	M3	N.W.	GW	PART LINK
4	PL3686/RD	CONDENSER		OUTLANDER	'07-08						
5	MBMG073 F LA	MUD FLAP FRONT LH		OUTLANDER	'08						
	MBMG073 F RA	MUD FLAP FRONT RH		OUTLANDER	'08						
6	MBMG073 R LA	MUD FLAP REAR LH		OUTLANDER	'08						
	MBMG073 R RA	MUD FLAP REAR RH		OUTLANDER	'08						

## 7 F. BUMPER REINFORCEMENT



## 8 SIDE SKIRT

**\*\*NEW\*\***



## 9 CHROME CROSS BAR



NO	CODE	DESCRIPTION	PATTERN	MODEL	YEAR	OEM	PCS	M3	N.W.	GW	PART LINK
7	MBBR073 NA	F. BUMPER REINFORCEMENT		OUTLANDER	07-09	6400A781					
	MBBR073 CA	BUMPER REINFORCEMENT MIDDLE		OUTLANDER	07-09	6400A477					
8	MBSK073 LA	SIDE SKIRT LH		OUTLANDER	'08	6512A015					
	MBSK073 RA	SIDE SKIRT RH		OUTLANDER	'08	6512A016					
9	MISC2469 NA	CHROME CROSS BAR		OUTLANDER	'07	MISC2469 NA					
	MISC2469 NB	CHROME CROSS BAR CH3+		OUTLANDER	'07	MISC2469 NB					

## 10 WATER POT



## 11 DOOR HANDLE COVERS



## 12 INNER FENDER



NO	CODE	DESCRIPTION	PATTERN	MODEL	YEAR	OEM	PCS	M3	N.W.	GW	PART LINK
10	MBWW073 NA	WATER POT		OUTLANDER	'08	8260A094	10	0.3743	10.00	12.00	
11	MBDC075 NA	DOOR HANDLE COVERS		OUTLANDER	'07	MBDC075 NA					
12	MBIF073 LA	INNER FENDER LH		OUTLANDER	'08	5370A391	50	12.0000	14.00	0.18	
	MBIF073 RA	INNER FENDER RH		OUTLANDER	'08	5370A072	50	12.0000	14.00	0.18	

# MITSUBISHI OUTLANDER 2010



1 FRONT BUMPER



2 GRILLE



3 BUMPER FINISHER



NO	CODE	DESCRIPTION	PATTERN	MODEL	YEAR	OEM	PCS	M3	N.W.	GW	PART LINK
1	MBB075 NA	FRONT BUMPER		OUTLANDER	10	6400B829/6400B826/6400D092					
2	MBG075 NA	GRILLE		OUTLANDER	10	6402A198					
3	MBBF075 NA	BUMPER FINISHER		OUTLANDER	10	6402A199					

4 FRONT BUMPER MOULDING



5 HEAD LAMP



R/LA A

6 HEAD LAMP WITH XENON HOLE R/LB A



NO	CODE	DESCRIPTION	PATTERN	MODEL	YEAR	OEM	PCS	M3	N.W.	GW	PART LINK
4	MBGM075 NA	FRONT BUMPER MOULDING		OUTLANDER	10	6400C703					
5	MBHL075 LA	HEAD LAMP LH		OUTLANDER	10						
	MBHL075 RA	HEAD LAMP RH		OUTLANDER	10						
6	MBHL075 LB	HEAD LAMP WITH XENON HOLE LH		OUTLANDER	10	8301A705					
	MBHL075 RB	HEAD LAMP WITH XENON HOLE RH		OUTLANDER	10	8301A706					

7 FOG LAMP



8 FOG LAMP COVER



9 SIDE LAMP



NO	CODE	DESCRIPTION	PATTERN	MODEL	YEAR	OEM	PCS	M3	N.W.	GW	PART LINK
7	MBFL075 LA	FOG LAMP LH		OUTLANDER	10						
	MBFL075 RA	FOG LAMP RH		OUTLANDER	10						
8	MBFC075 LA	FOG LAMP COVER LH		OUTLANDER	10	8321A298					
	MBFC075 RA	FOG LAMP COVER RH		OUTLANDER	10	8321A290					
9	MBSL075 LA	SIDE LAMP LH		OUTLANDER	10						
	MBSL075 RA	SIDE LAMP RH		OUTLANDER	10						

10 REAR BUMPER LAMP



11 REAR LAMP INNER



12 REAR LAMP OUTSIDE



NO	CODE	DESCRIPTION	PATTERN	MODEL	YEAR	OEM	PCS	M3	N.W.	GW	PART LINK
10	MBBL076 LA	REAR BUMPER LAMP LH		OUTLANDER	10	8355A004					
	MBBL076 RA	REAR BUMPER LAMP RH		OUTLANDER	10	8337A015					
11	MBRL075 LA	REAR LAMP INNER LH		OUTLANDER	10	8331A701					
	MBRL075 RA	REAR LAMP INNER RH		OUTLANDER	10	8331A702					
12	MBL075 LA	REAR LAMP OUTSIDE LH		OUTLANDER	10	8330A395					
	MBL075 RA	REAR LAMP OUTSIDE RH		OUTLANDER	10	8330A396					

# MITSUBISHI OUTLANDER 2010

## 1 DOOR MIRROR



## 2 INNER FENDER



## 3 COOLING FAN COI



NO	CODE	DESCRIPTION	PATTERN	MODEL	YEAR	OEM	PCS	M3	N.W.	GW	PART LINK
1	MBMR075 LA	DOOR MIRROR LH		OUTLANDER	10						
	MBMR075 RA	DOOR MIRROR RH		OUTLANDER	10						
2	MBIF075F R/LA	INNER FENDER F. RH/LH		OUTLANDER	10	5370A072/391					
	MBIF075R R/LA	INNER FENDER R. RH/LH		OUTLANDER	10						
3	6400C446	FRONT BUMPER WING		OUTLANDER	10	6400C446					

## 4 ENGINE COVER



## 5 ENGINE COVER R/LA A



## 6 REAR DOOR BOARD



NO	CODE	DESCRIPTION	PATTERN	MODEL	YEAR	OEM	PCS	M3	N.W.	GW	PART LINK
4	5379A032/31	ENGINE COVER		OUTLANDER	10	5379A03231					
5	5370A032	ENGINE COVER RH		OUTLANDER	10	5370A032					
	MN154379	ENGINE COVER LH		OUTLANDER	10	MN154379					
6	5817A011HA	REAR DOOR BOARD		OUTLANDER	10	5817A011HA					

## 7 LICENSE BOARD



## 8 FRONT BUMPER COVER



## 9 FRONT BUMPER FRAME



NO	CODE	DESCRIPTION	PATTERN	MODEL	YEAR	OEM	PCS	M3	N.W.	GW	PART LINK
7	MBLP075 NA	LICENSE BOARD		OUTLANDER	10	5817A022HA					
8	MBB075 SP	FRONT BUMPER COVER		OUTLANDER	10	6406C425					
9	MBBR075 NA	FRONT BUMPER FRAME		OUTLANDER	10	6400A781					

## 10 UP COVER OF WATER TANK



## 11 DOWN COVER OF WATER TANK



## 12 WATER TANK



NO	CODE	DESCRIPTION	PATTERN	MODEL	YEAR	OEM	PCS	M3	N.W.	GW	PART LINK
10	7450A589	UP COVER OF WATER TANK		OUTLANDER	10	7450A589					
	7450A588	UP COVER OF WATER TANK		OUTLANDER	10	7450A588					
11	6400C445	DOWN COVER OF WATER TANK		OUTLANDER	10	6400C445					
	6400C446	DOWN COVER OF WATER TANK		OUTLANDER	10	6400C446					
12	860A094	WATER TANK		OUTLANDER	10	860A094					

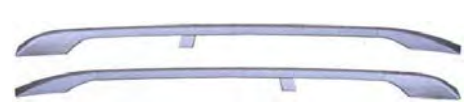
## 13 WING LOWER COVER



## 15 SIDE BUMPER



## 16 LUGGAGE COVER



## 14 WING FRONT COVER



NO	CODE	DESCRIPTION	PATTERN	MODEL	YEAR	OEM	PCS	M3	N.W.	GW	PART LINK
13	6515A012HA	WING LOWER COVER		OUTLANDER	10	6515A012HA					
14	6515A037HA	WING FRONT COVER		OUTLANDER	10	6515A037HA					
15	MBSK075 R/ LA	SIDE BUMPER RH/LH		OUTLANDER	10	6512A016/6512A015					
16	7661A096/095	LUGGAGE COVER		OUTLANDER	10	7661A096/095					
17	MBRF075 NA	RADIATOR FAN SHROUD		OUTLANDER	10						

# MITSUBISHI OUTLANDER 2013



1 FRONT BUMPER W/ LOWER FINISHER

2 FRONT BUMPER FINISHER

3 REAR BUMPER



NO	CODE	DESCRIPTION	PATTERN	MODEL	YEAR	OEM	PCS	M3	N.W.	GW	PART LINK
1	MBB077 NA	FRONT BUMPER W/ LOWER FINISHER		OUTLANDER	'13						
2	MBBF077 NA	FRONT BUMPER FINISHER		OUTLANDER	'13						
3	MBB078 NA	REAR BUMPER		OUTLANDER	'13						

4 GRILLE

5 HEAD LAMP NORMAL LHD

6 HEAD LAMP PROJECTOR LHD



NO	CODE	DESCRIPTION	PATTERN	MODEL	YEAR	OEM	PCS	M3	N.W.	GW	PART LINK
4	MBG077 NA	GRILLE		OUTLANDER	'13						
5	MBHL077 LA	HEAD LAMP NORMAL LHD LH		OUTLANDER	'13						
	MBHL077 RA	HEAD LAMP NORMAL LHD RH		OUTLANDER	'13						
6	MBHL077 LC	HEAD LAMP PROJECTOR LHD LH		OUTLANDER	'13						
	MBHL077 RC	HEAD LAMP PROJECTOR LHD RH		OUTLANDER	'13						

7 FOG LAMP

8 FOG LAMP COVER

9 REFLECTOR TAIL LAMP



NO	CODE	DESCRIPTION	PATTERN	MODEL	YEAR	OEM	PCS	M3	N.W.	GW	PART LINK
7	MBFL077 LA	FOG LAMP LH		OUTLANDER	'13						
	MBFL077 RA	FOG LAMP RH		OUTLANDER	'13						
8	MBFC077 LA	FOG LAMP COVER LH		OUTLANDER	'13						
	MBFC077 RA	FOG LAMP COVER RH		OUTLANDER	'13						
9	MBRL077 LA	REFLECTOR TAIL LAMP LH		OUTLANDER	'13						
	MBRL077 RA	REFLECTOR TAIL LAMP RH		OUTLANDER	'13						

10 TAIL LAMP

11 BUMPER LAMP

12 DOOR MIRROR



LA

RA



NO	CODE	DESCRIPTION	PATTERN	MODEL	YEAR	OEM	PCS	M3	N.W.	GW	PART LINK
10	MBL077 LA	TAIL LAMP LH		OUTLANDER	'13						
	MBL077 RA	TAIL LAMP RH		OUTLANDER	'13						
11	MBBL078 LA	BUMPER LAMP LH (CLEAR/CLEAR)		OUTLANDER	'13						
	MBBL078 RA	BUMPER LAMP RH (RED/CLEAR)		OUTLANDER	'13						
12	MBMR077 LA	DOOR MIRROR LH		OUTLANDER	'13						
	MBMR077 RA	DOOR MIRROR RH		OUTLANDER	'13						

# MITSUBISHI OUTLANDER 2013

1 ENGINE COVER UPPER (WATER TANK COVER)



2 ENGINE COVER UNDER (FRONT)



3 ENGINE COVER UNDER (REAR)



NO	CODE	DESCRIPTION	PATTERN	MODEL	YEAR	OEM	PCS	M3	N.W.	GW	PART LINK
1	MEEU077 CA	ENGINE COVER UPPER (WATER TANK COVER)		OUTLANDER	'13						
2	MBEU077 F NA	ENGINE COVER UNDER (FRONT)		OUTLANDER	'13						
3	MBEU077 R NA	ENGINE COVER UNDER (REAR)		OUTLANDER	'13						

4 F.INNER FENDER



5 F.INNER FENDER (SMALL)



6 REAR LICENSE BOARD



NO	CODE	DESCRIPTION	PATTERN	MODEL	YEAR	OEM	PCS	M3	N.W.	GW	PART LINK
4	MBIF077 LA	F.INNER FENDER LH		OUTLANDER	'13						
	MBIF077 RA	F.INNER FENDER RH		OUTLANDER	'13						
5	MBIF077 LB	F.INNER FENDER LH (SMALL)		OUTLANDER	'13						
	MBIF077 RB	F.INNER FENDER RH (SMALL)		OUTLANDER	'13						
6	MELP077 NA	REAR LICENSE BOARD		OUTLANDER	'13						

7 FRONT BUMPER FEINFORCEMENT (LOWER)



8 FRONT BUMPER REINFORCEMENT (UPPER)



9 REAR BUMPER REINFORCEMENT



NO	CODE	DESCRIPTION	PATTERN	MODEL	YEAR	OEM	PCS	M3	N.W.	GW	PART LINK
7	MBBR077 LA	FRONT BUMPER FEINFORCEMENT (LOWER)		OUTLANDER	'13						
8	MBBR077 UA	FRONT BUMPER REINFORCEMENT (UPPER)		OUTLANDER	'13						
9	MBBR078 NA	REAR BUMPER REINFORCEMENT		OUTLANDER	'13						

10 SIDE SKIRT SET (R/L)



11 F.BUMPER BRACKET



12 R.BUMPER BRACKET



NO	CODE	DESCRIPTION	PATTERN	MODEL	YEAR	OEM	PCS	M3	N.W.	GW	PART LINK
10	MBSK077 SA	SIDE SKIRT SET (R/L)		OUTLANDER	'13						
11	MBBS077 LA	F.BUMPER BRACKET LH		OUTLANDER	'13						
	MBBS077 RA	F.BUMPER BRACKET RH		OUTLANDER	'13						
12	MBBS078 LA	R.BUMPER BRACKET LH		OUTLANDER	'13						
	MBBS078 RA	R.BUMPER BRACKET RH		OUTLANDER	'13						

13 WATER TANK



NO	CODE	DESCRIPTION	PATTERN	MODEL	YEAR	OEM	PCS	M3	N.W.	GW	PART LINK
13	MBTR077 NA	WATER TANK		OUTLANDER	'13						